

192 BROOKLINE ST. WORCESTER, MA 01603 SITE PLAN



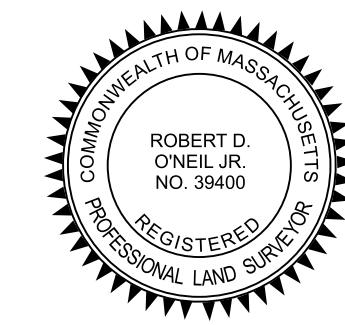
LOCUST MAP 1"=400'

OWNER/
APPLICANT: +
ALI FADHEL

SITE ADDRESS: +
192 BROOKLINE ST.,
WORCESTER, MA 01603

DRAWING LIST +

1	G1.0	COVERSHEET
2	G1.1	NOTES
3	V1.1	EXISTING CONDITIONS
4	C1.1	SITE LAYOUT
5	C2.1	GRADING PLAN
6	C3.1	UTILITY PLAN
7	LD1.1	LANDSCAPING PLAN
8	C4.1	EROSION CONTROL PLAN
9	C5.1	CONST. DETAIL SHEET 1 OF 3
10	C5.2	CONST. DETAIL SHEET 2 OF 3
11	C5.3	CONST. DETAIL SHEET 3 OF 3



CIVIL ENGINEERING LAND SURVEYING
ROBERT D. O'NEIL, P.L.S.
66 DRURY LANE
WORCESTER, MA 01609
(508)868-5144
JOE GRAHAM, P.E.
13 SNOW DRIVE
WESTFORD, MA 01886
(978)501-2695

ZONING TABLE						
DISTRICT	MIN REQUIREMENTS					
	LOT AREA SQFT	LOT FRONTAGE	FRONT YARD	SIDE YARD	REAR YARD	ADD'L AREA PER DU
RS-7	7,000	65	20	8	20	-

- ALL WORK TO CONFORM TO CITY OF WORCESTER STANDARDS.
- ALL ELEVATIONS AND BENCHMARKS REFER TO NAD-83 DATUM.
- THE APPLICANT WILL PROVIDE, AT NO COST TO THE CITY, ALL FACILITIES SHOWN ON THE PLAN INCLUDING BUT NOT LIMITED TO ROADWAYS, CURBS, BOUND, DRAINAGE SYSTEMS, SANITARY SEWER SYSTEMS, UTILITIES, STREET LIGHTS, AND EARTHWORKS EXCEPT AS OTHERWISE NOTED.

11/18/24	PLANNING BOARD	1
10/17/24	CONSERVATION COMMISSION	0

BROOKLINE ST. EXT.

#192

GENERAL NOTES +

- PROPERTY LINES & TOPOGRAPHIC SURVEY REVIEWED BY ROBERT D. O'NEIL JR., R.P.L.S. 66 DRURY LANE, WORCESTER, MASSACHUSETTS, 01609
 - PROPOSED GRADING/ DESIGN REVIEW BY JOSEPH GRAHAM, PE, 13 SNOW DRIVE WESTFORD, MA 01886.
 - ALL CONSTRUCTION MATERIALS & STANDARDS SHALL CONFORM TO THE CITY OF WORCESTER STANDARD SPECIFICATIONS. FOR ADDITIONAL DESIGN DETAILS CONSULT THE CITY OF WORCESTER'S "CONSTRUCTION DETAIL MANUAL" AS PREPARED BY THE DEPARTMENT OF PUBLIC WORKS.
 - ANY OR ALL PROPOSED UTILITY CONNECTIONS (i.e. SEWER & WATER) TO BE INSTALLED PER CITY OF WORCESTER STANDARDS.
 - ANY CHANGES OR AMENDMENTS TO THIS PLAN WILL REQUIRE APPROVAL FROM JOSEPH GRAHAM (THE ENGINEER).
 - SEVENTY TWO HOURS PRIOR TO COMMENCING ANY EXCAVATION, THE CONTRACTOR SHALL NOTIFY DIGSAFE AT (888) 344-7233. THE CONTRACTOR SHALL COORDINATE INSTALLATION OF NEW UTILITIES WITHIN IN THE VICINITY OF EXISTING UTILITIES. (UNDERGROUND AND OVERHEAD) WITH THE APPROPRIATE UTILITY PROVIDER.
 - THE CONTRACTOR SHALL RECORD AND PROVIDE THE OWNER WITH AS-BUILT LOCATIONS OF ALL UTILITIES INSTALLED AS PART OF HIS/HER WORK, INCLUDING UTILITIES NOT INDICATED ON THE PLAN (I.E. GAS, CABLE, TV TELEPHONE, ELECTRIC, ETC.) IF APPLICABLE.
 - THE CONTRACTOR SHALL BE RESPONSIBLE TO LAY OUT THE CONSTRUCTION AS SHOWN ON PLAN.
 - THE CONTRACTOR SHALL BE RESPONSIBLE TO ENSURE THAT THE PROPOSED CONSTRUCTION ACTIVITIES DO NOT DAMAGE OR UNDERMINE EXISTING SLOPES, BUILDINGS, WALLS, STRUCTURES, ETC. IN THE AREA AROUND THE CONSTRUCTION. REPAIR OF EXISTING SLOPES, BUILDINGS, WALLS, STRUCTURES, ETC. THAT ARE DAMAGED OR UNDERMINED BY THE CONTRACTORS WORK SHALL BE THE RESPONSIBILITY OF THE CONTRACTOR.
 - EXISTING UTILITIES WERE LOCATED AS PART OF THIS PLAN AND ARE TO BE FIELD VERIFIED. THE CONTRACTOR IS RESPONSIBLE FOR COORDINATING THE EXISTING UTILITY LOCATIONS AND ENSURING THAT THE PROPOSED WORK DOES NOT CONFLICT WITH THE EXISTING UTILITY NOT SHOWN. ALL REQUIRED PERMITS SHALL BE SECURED PRIOR TO COMMENCING WORK. PRIOR TO COMMENCING ANY WORK ONSITE THE CONTRACTOR SHALL NOTIFY THE CITY OF WORCESTER DEPARTMENT OF PUBLIC WORKS.
 - SUITABLE FILL SHALL CONSIST OF MATERIAL FREE OF ORGANIC MATERIALS, LOAM, AND ANY DELETERIOUS MATERIAL. FILL SHALL NOT CONTAIN STONES LARGER THAN 10" IN ANY DIMENSION, AND SHALL HAVE LESS THAN 75% PASSING THE NO. 4 SIEVE AND A MAXIMUM OF 20% PASSING THE NO. 200 SIEVE. SUITABLE FILL SHALL NOT CONTAIN ANY BUILDING RUBBLE, GRANITE OR CONCRETE BLOCK, ROOFING MATERIALS, OR OTHER CONSTRUCTION REFUSE. AT THE TIME OF PLACEMENT SUITABLE FILL SHALL NOT CONTAIN FROST, SNOW, OR ICE AND SHALL NOT CONTAIN WATER GREATER THAN THE OPTIMAL MOISTURE CONTENT.
 - INVERT ELEVATIONS INDICATED AT THE BUILDING/FOUNDATION SHOULD BE COORDINATED BETWEEN THE SITE PLAN AND THE PLUMBING CONTRACTOR.
 - EXTERIOR FIXTURES SHALL BE DARK-SKY COMPLIANT AND/OR SHIELDED TO MINIMIZE SPILLOVER AND BE OF A WARMER TEMPERATURE (3,000K OR LESS).
 - PROVIDED THAT THE PROJECT IS CONSTRUCTED AND OPERATED IN SUBSTANTIAL ACCORDANCE WITH FINAL REVISED PLANS, INCLUDING ARCHITECTURAL RENDERINGS, CALCULATIONS, AND OPERATION AND MAINTENANCE AND SCHEDULES, ON FILE WITH THE CITY OF WORCESTER AND IN ACCORDANCE WITH ALL APPLICABLE GOVERNMENTAL CODES.
- DIGSAFE:**
- EXCEPT FOR VISIBLE STRUCTURES (MANHOLES, GATES, POLES, ETC.) LOCATED BY ROBERT D. O'NEIL JR., R.P.L.S. ALL UNDERGROUND UTILITIES SHOWN WERE COMPLIED ACCORDING TO AVAILABLE RECORD PLANS FOR THE VARIOUS UTILITY COMPANIES AND PUBLIC AGENCIES AND ARE APPROXIMATE ONLY. ACTUAL LOCATIONS MUST BE DETERMINED IN THE FIELD BEFORE DESIGNING, EXCAVATING, BLASTING, OR INSTALLING, BACKFILLING, GRADING, PAVEMENT RESTORATION, OR REPAIRING. ALL UTILITY COMPANIES, PUBLIC AND PRIVATE, MUST BE CONTACTED, INCLUDING THOSE IN CONTROL OF UTILITIES NOT SHOWN ON THIS PLAN. NOT RESPONSIBLE FOR DAMAGES INCURRED AS A RESULT OF UTILITIES OMITTED OR INACCURATELY SHOWN. THE CONTRACTOR IS TO CONTACT "DIGSAFE" @ 1-888-344.7233 PRIOR TO ANY CONSTRUCTION.

ABBREVIATIONS +

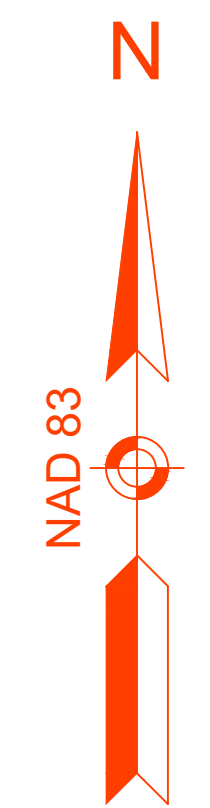
A.C.I.	AMERICAN CONCRETE INSTITUTE	O.D.	OUTSIDE DIAMETER
BLDG.	BUILDING	U.N.O.	UNLESS NOTED OTHERWISE
CONC.	CONCRETE	REF.	REFERENCE
C.J.	CONTROL JOINT	R.	RISER
COL.	COLUMN	R.O.	ROUGH OPENING
DET.	DETAIL	RM.	ROOM
DIA.	DIAMETER	S/STL.	STAINLESS STEEL
DN.	DOWN	STRUCT.	STRUCTURAL
EL/ELEV.	ELEVATION	SPEC.	SPECIFICATIONS
ELEC.	ELECTRICAL	T.O.	TOP OF (...)
EQ.	EQUAL	T.O.CONC.	TOP OF CONCRETE
FIN.	FINISH	T.O.F.	TOP OF FRAMING
FLR.	FLOOR	T.O.STL.	TOP OF STEEL
GALV.	GALVANIZED	T.O.W.	TOP OF WALL
GYP.	GYPSUM	TYP.	TYPICAL
I.D.	INSIDE DIAMETER	@	AT
JT.	JOINT	+	AND
MECH.	MECHANICAL	BD.	BOARD
MIN.	MINIMUM	A.F.F.	ABOVE FINISHED FLOOR
N.T.S.	NOT TO SCALE	U.N.O.	UNLESS OTHERWISE NOTED
NO.	NUMBER	V.I.F.	VERIFY IN FIELD
O.C.	ON CENTER		
OPG.	OPENING		

SYMBOLS +

EXISTING	PROPOSED	DESCRIPTION
JB	JB	JERSEY BARRIER ON BRIDGE OR JERSEY BARRIER
CB	CB	CATCH BASIN
		CATCH BASIN CURB INLET
FP	FP	FLAG POLE
GP	GP	GAS PUMP
MB	MB	MAIL BOX
		POST SQUARE
		POST CIRCULAR
		WELL
WELL	WELL	ELECTRIC HANDHOLE
EHH	EHH	FENCE GATE POST
		GAS GATE
GG	GG OR	SIGN
BHL #	BHL #	BORING HOLE
MW #	MW #	MONITORING WELL
TP #	TP #	TEST PIT
		HYDRANT
		LIGHT POLE
		COUNTY BOUND
		GPS POINT
		CABLE MANHOLE
		DRAINAGE MANHOLE
		ELECTRIC MANHOLE
		GAS MANHOLE
		MISC MANHOLE
		SEWER MANHOLE
		TELEPHONE MANHOLE
		WATER MANHOLE
		MASSACHUSETTS HIGHWAY BOUND
		MONUMENT
		STONE BOUND
		TOWN OR CITY BOUND
		TRAVERSE OR TRIANGULATION STATION
		TROLLEY POLE OR GUY POLE
		TRANSMISSION POLE
		UTILITY POLE W/ FIREBOX
		UTILITY POLE WITH DOUBLE LIGHT
		UTILITY POLE W / 1 LIGHT
		UTILITY POLE
		BUSH
		TREE
		STUMP
		SWAMP / MARSH
		WATER GATE
		PARKING METER



	DATE
	APPR
SYMBOL DESCRIPTION	
ALI FADHEL	
DESIGNED BY	JRG
DRAWN BY	JRG
CHECKED BY	JRG
BROOKLINE ST. EXT. SITE PLAN	
NOTES	
DR 24012 - NOTES	
SCALE: AS NOTED	
PROJECT NO.: 24012	
G1.1	
SHEET 2 OF 11	



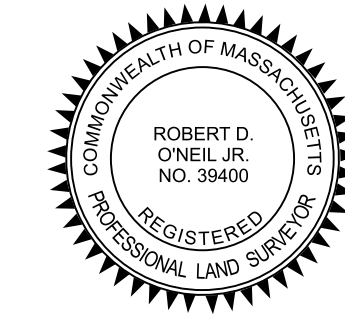
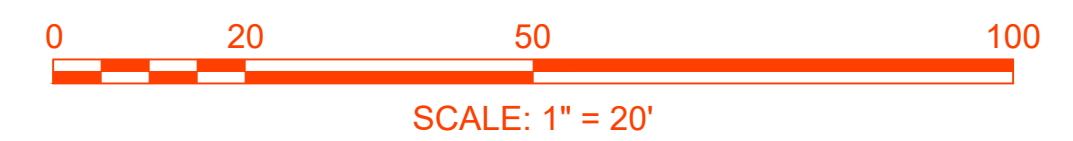
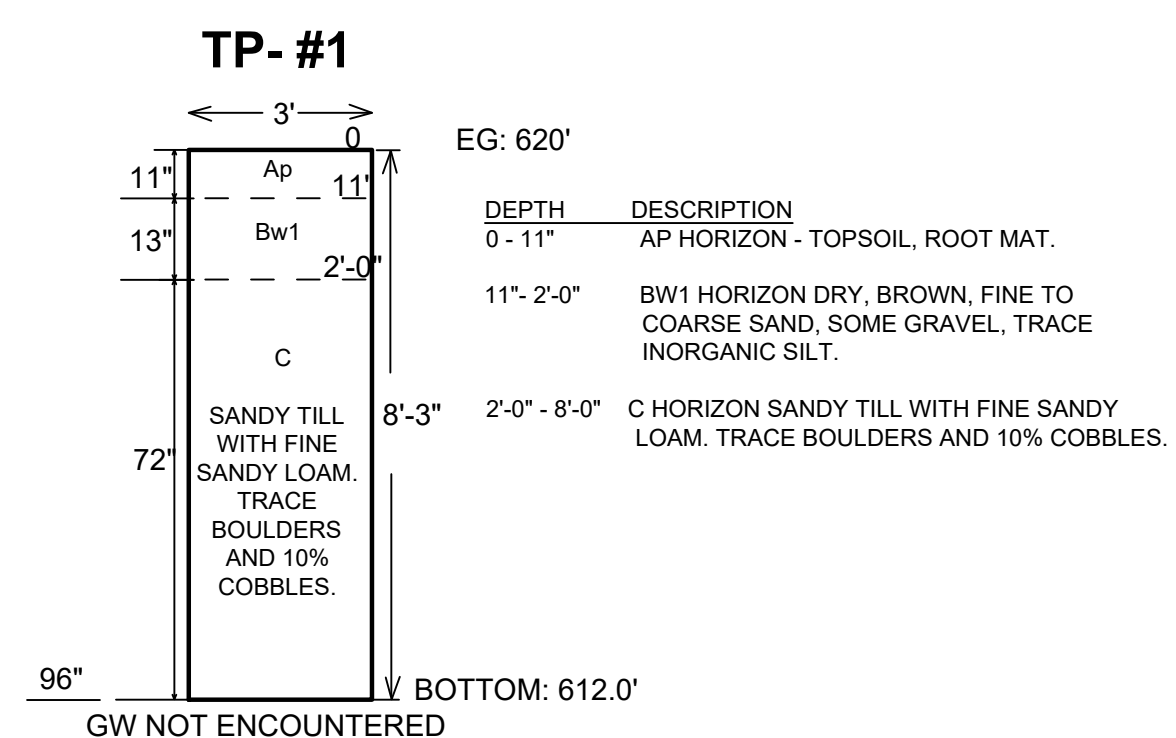
EROSION CONTROLS

N/F JAMES SOFFAN TRUSTEE #271 MILL ST. W.D.R.D. BK:22213/PG:143 MBL:42-031-00021

TEST PITS +

SURVEY NOTES +

1. CONTOURS SHOWN IN RED ILLUSTRATE THE LIMITS OF UNAPPROVED FILL GRADED ON THE SITE.
2. SURVEY COMPLETED BY ROBERT O'NEIL ON 8/27/2024.



SYN	DESCRIPTION	DATE	APP

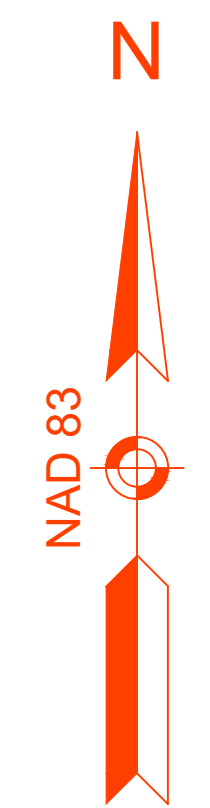
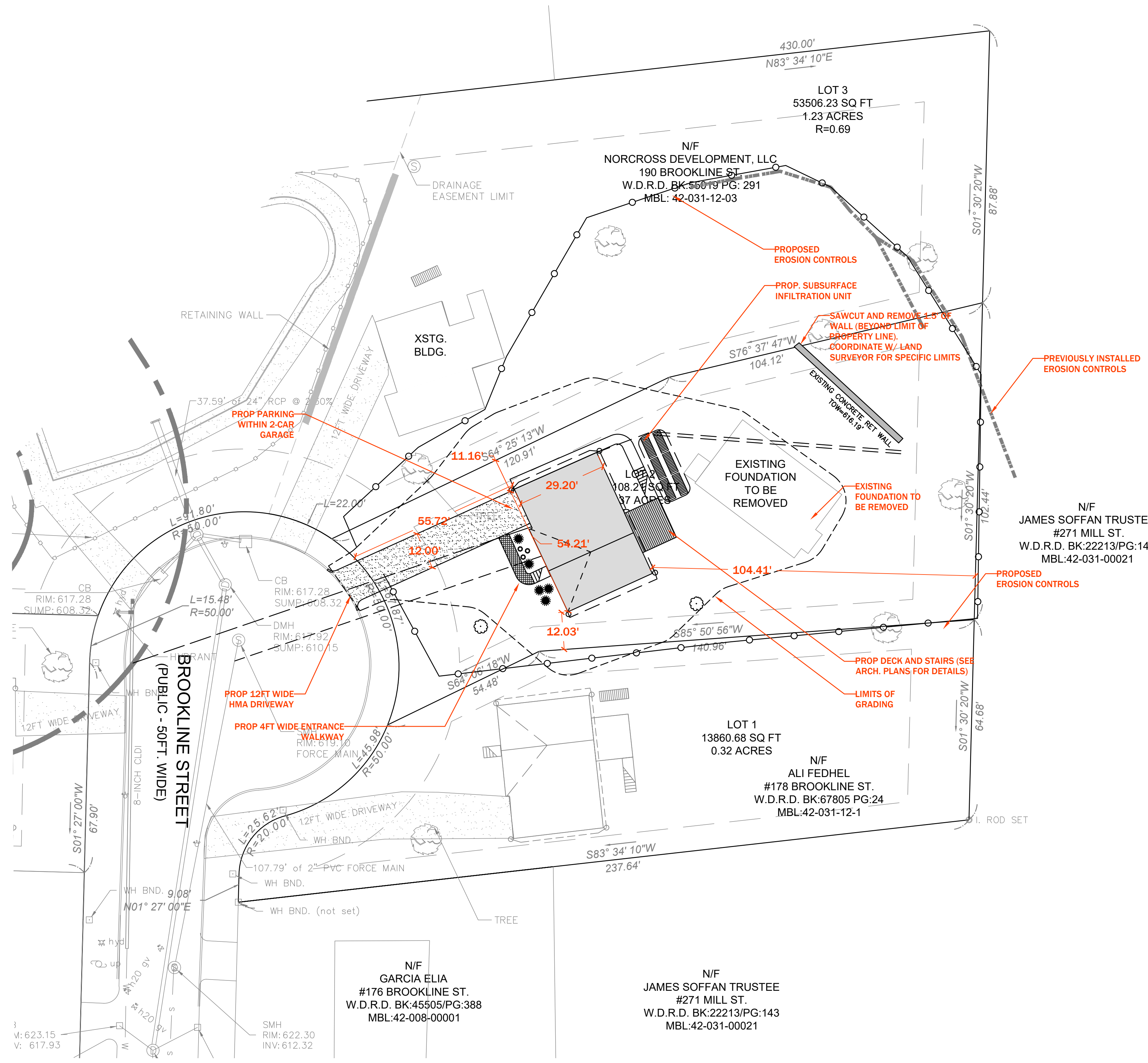
ALI FADHEL

DESIGNED BY JRG
DRAWN BY JRG
CHECKED BY JRG

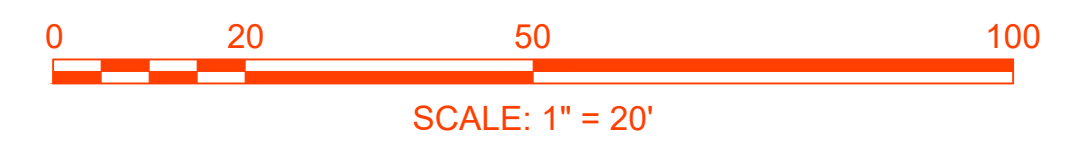
BROOKLINE ST. EXT.
SITE PLAN
EXISTING CONDITIONS

DATE: 8/27/24
SCALE: AS NOTED
PROJECT NO.: 24012

V1.1



- SITE NOTES**
- 1. TOTAL FRONT YARD SETBACK AREA = 2375.58.
TOTAL DRIVEWAY AREA IS = 661.35.
THIS IS 27.8% < 40% MAX. ALLOWED



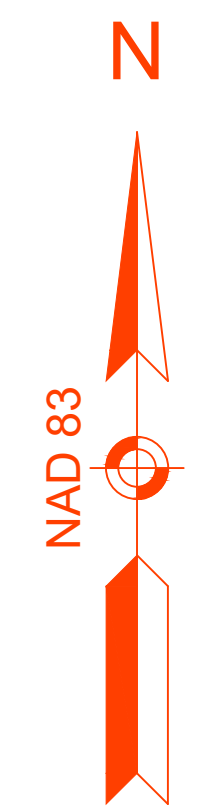
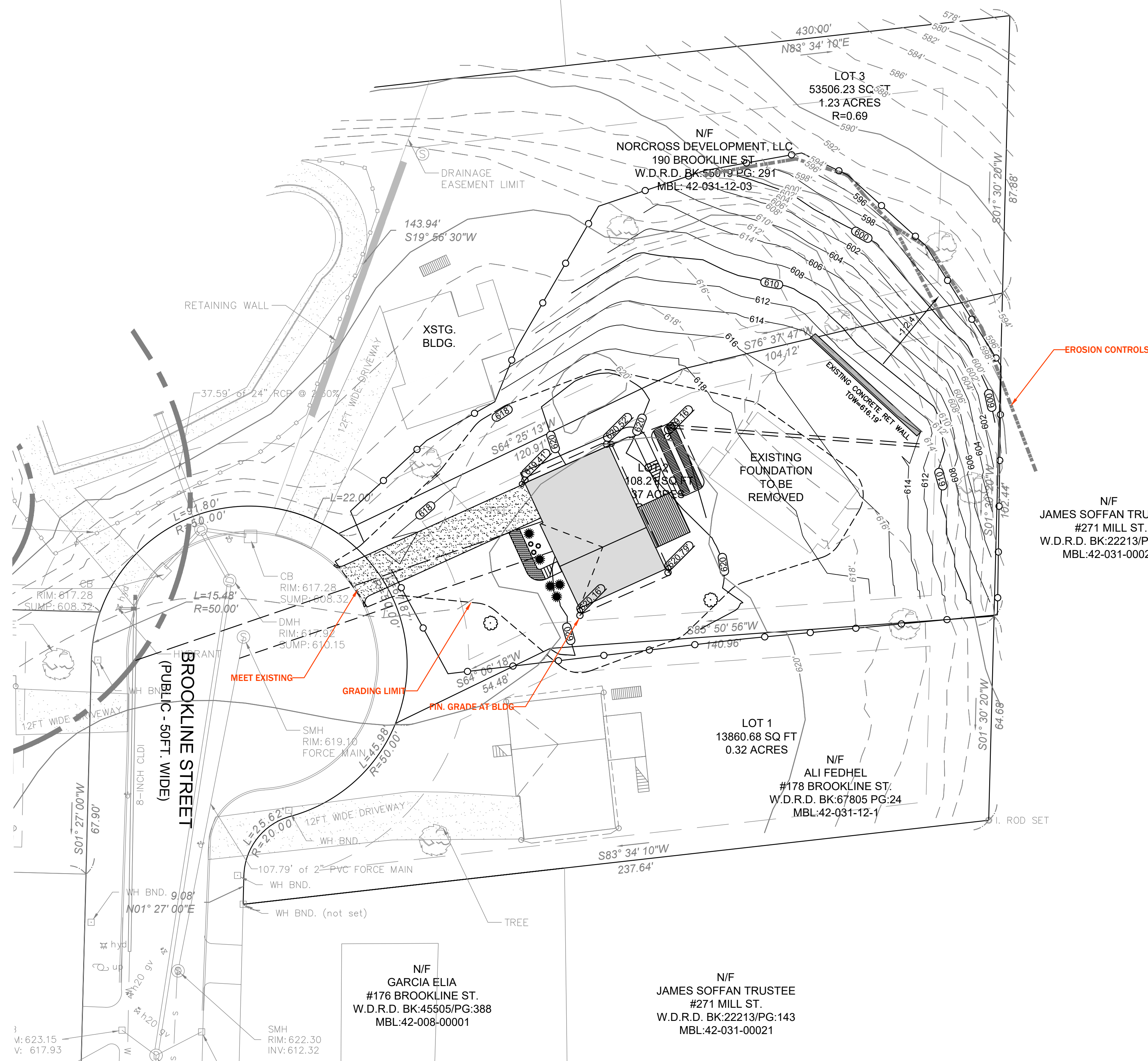
SYN	DESCRIPTION	DATE	APP

ALI FADHEL

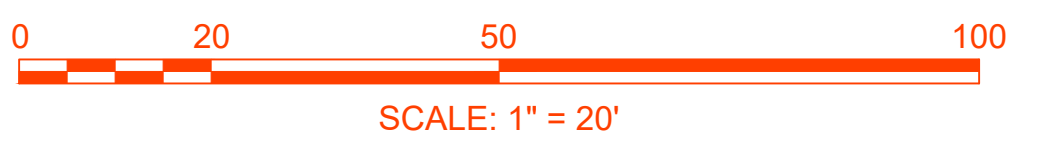
DESIGNED BY	###
DRAWN BY	###
CHECKED BY	###

BROOKLINE ST. EXT. SITE PLAN SITE LAYOUT

DRAWING NO.	24012 - SITE LAYOUT
SCALE:	AS NOTED
PROJECT NO.:	24012
C1.1	
SHEET	4 OF 11



- GRADING NOTES**
1. MAX SLOPE 2:1. IN AREAS OF MAX SLOPE OF 2:1 CONTRACTOR TO INSTALLED EROSION CONTROL MATTING.
 2. PLEASE SEE EROSION CONTROL PLAN AND LANDSCAPING PLAN FOR EROSION CONTROL MATTING LIMITS.



SYN	DESCRIPTION	DATE	APP

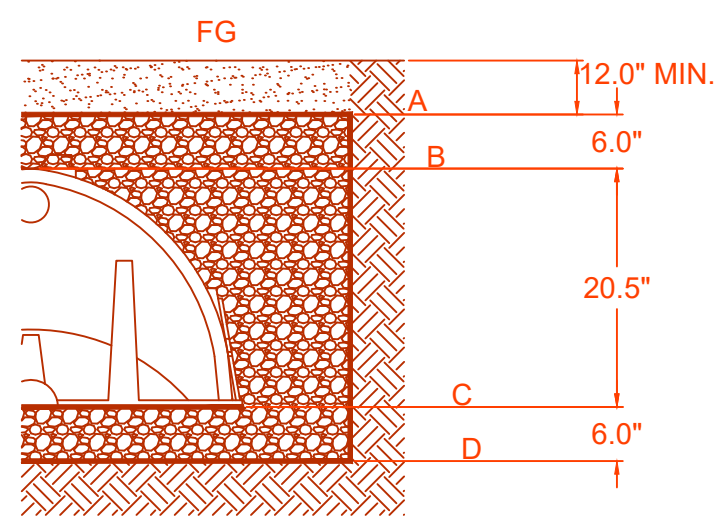
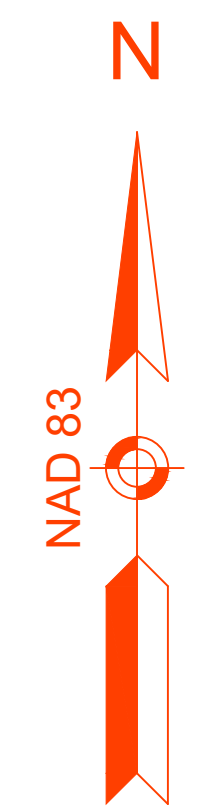
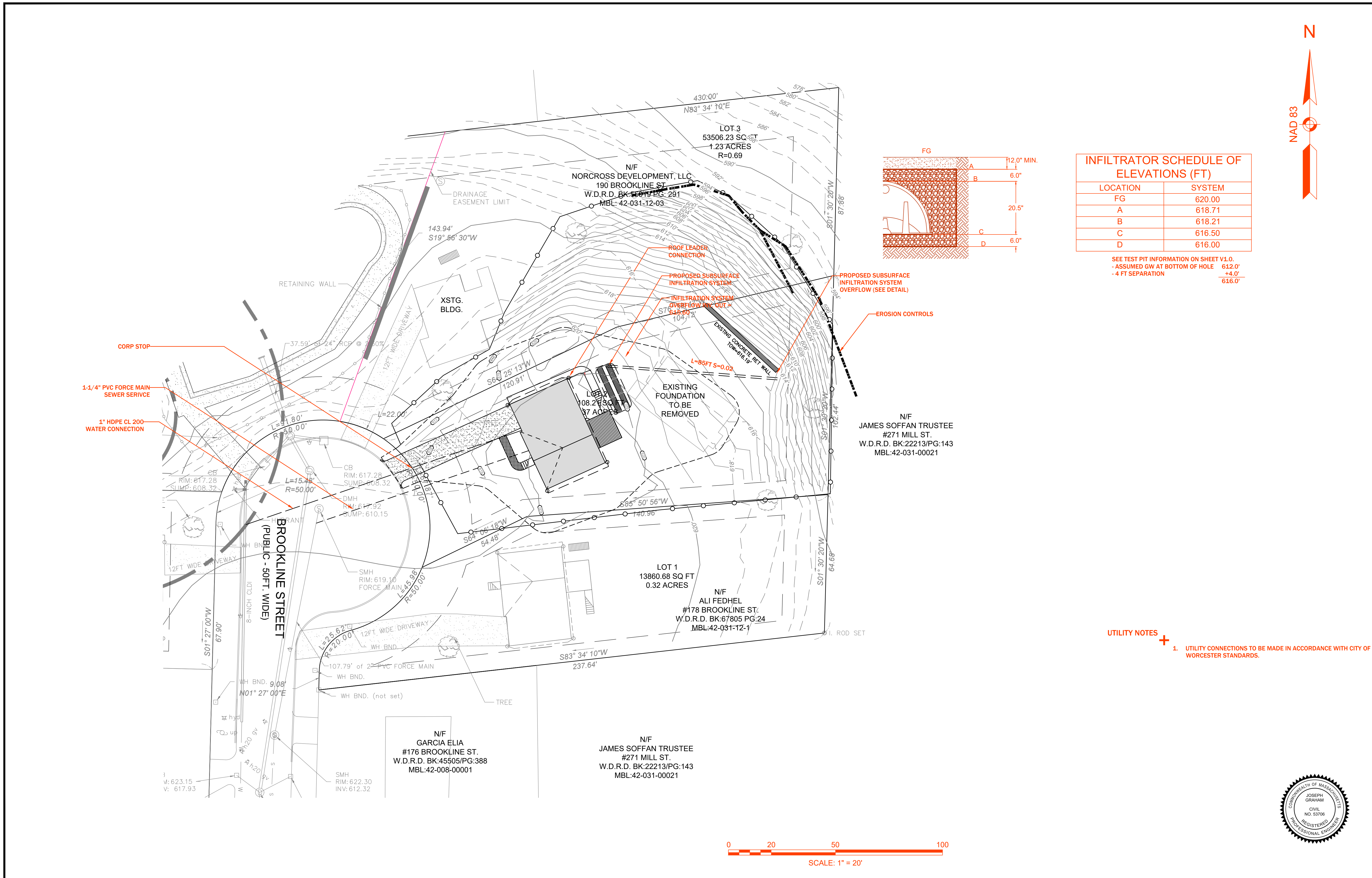
ALI FADHEL

DESIGNED BY	###
DRAWN BY	###
CHECKED BY	###

BROOKLINE ST. EXT.
SITE PLAN
GRADING PLAN

DRAWING: 24012 - GRADING & UTILITY
SCALE: AS NOTED
PROJECT NO.: 24012

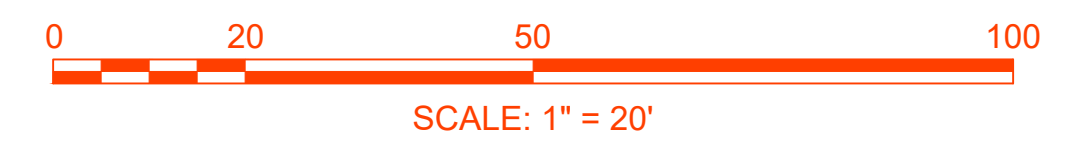
C2.1



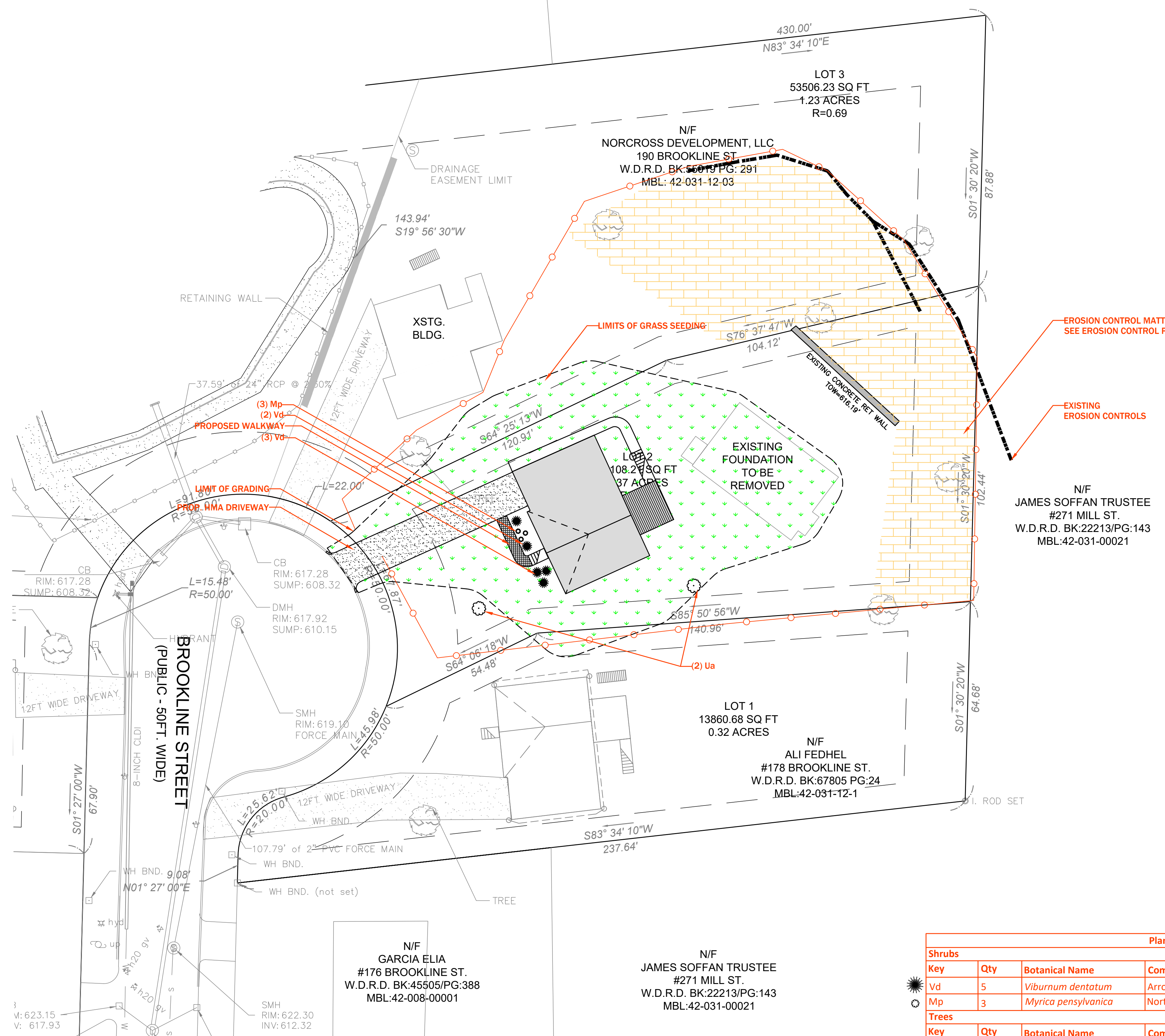
LOCATION	SYSTEM
FG	620.00
A	618.71
B	618.21
C	616.50
D	616.00

SEE TEST PIT INFORMATION ON SHEET V1.0.
 - ASSUMED GW AT BOTTOM OF HOLE 612.0'
 - 4 FT SEPARATION 44.0'
 616.0'

- UTILITY NOTES
- UTILITY CONNECTIONS TO BE MADE IN ACCORDANCE WITH CITY OF WORCESTER STANDARDS.



ALI FADHEL	BROOKLINE ST. EXT. SITE PLAN
DESIGNED BY JRG	DRAWN BY JRG
CHECKED BY JRG	UTILTY PLAN
DRAWING NO: 24012 - UTILITY PLAN	
SCALE: AS NOTED	
PROJECT NO.: 24012	
C3.1	
SHEET 6 OF 11	



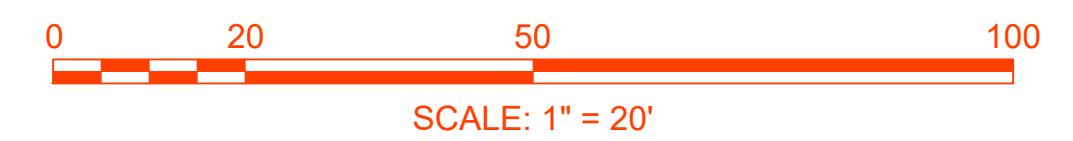
EROSION CONTROL MATTING
SEE EROSION CONTROL PLAN

EXISTING
EROSION CONTROLS

N/F
JAMES SOFFAN TRUSTEE
#271 MILL ST.
W.D.R.D. BK:22213/PG:143
MBL:42-031-00021

- LANDSCAPING NOTES**
- TREES TO BE PROTECTED DURING CONSTRUCTION
 - SEE EROSION CONTROL PLAN FOR LIMITS OF EROSION CONTROL MATTING.

Plant Schedule					
Shrubs					
Key	Qty	Botanical Name	Common Name	Cultivar	Size
Vd	5	<i>Viburnum dentatum</i>	Arrowwood	'Morton'	18-36" height
Mp	3	<i>Myrica pensylvanica</i>	Northern Bayberry		18-36" height
Trees					
Key	Qty	Botanical Name	Common Name	Size	
Ua	2	<i>Ulmus americana</i>	Valley Forge Elm	3.5" caliper	



APPR.	DATE	DESCRIPTION

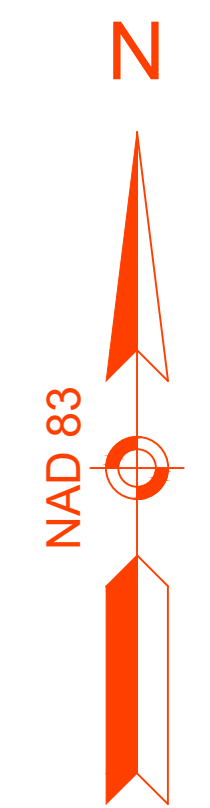
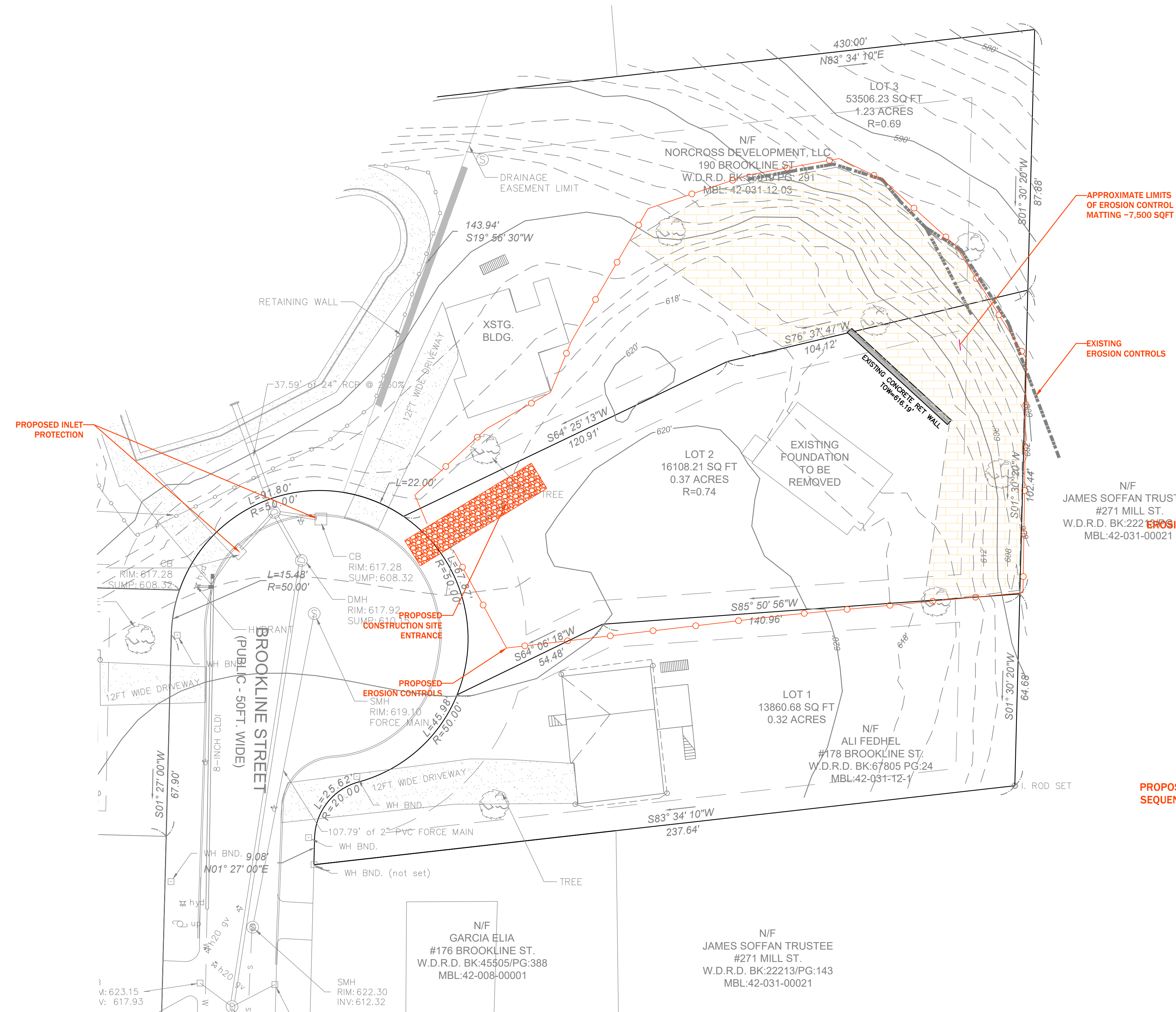
ALI FADHEL

DESIGNED BY	###
DRAWN BY	###
CHECKED BY	###

**BROOKLINE ST. EXT.
SITE PLAN
LANDSCAPING PLAN**

DRAWING NO. 24012 - LANDSCAPING PLAN
SCALE: AS NOTED
PROJECT NO.: 24012

LD1.1



SYN	DESCRIPTION	DATE	APP

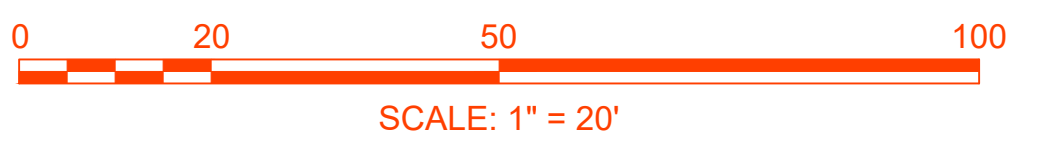
ALI FADHEL

EROSION CONTROL NOTES

1. THE APPLICANT OR CONTRACTOR/SUBCONTRACTOR IS RESPONSIBLE FOR MANAGING AND MAINTAINING THE EROSION CONTROLS THROUGHOUT CONSTRUCTION.
2. INSTALL AND MAINTAIN ALL EROSION AND SEDIMENT CONTROL MEASURES IN ACCORDANCE WITH MANUFACTURER SPECIFICATIONS AND GOOD ENGINEERING PRACTICES.
3. TEMPORARY EROSION AND SEDIMENT CONTROL MEASURES TO REDUCE DUST AND SEDIMENT TRANSPORT SHALL BE APPLIED AS SOON AS PRACTICABLE, OR BEFORE A 2-YEAR RAINFALL EVENT, BUT IN NO CASE MORE THAN SEVEN DAYS AFTER LAND DISTURBING ACTIVITY OCCURS.
4. THERE SHALL BE NO STOCKPILING OF SOIL OR OTHER MATERIAL WITHIN 30 FEET OF ANY RESOURCE AREA. SECURE OR PROTECT SOIL STOCKPILES THROUGHOUT THE PROJECT WITH TEMPORARY OR PERMANENT SOIL STABILIZATION MEASURES. THE OWNER IS ACCOUNTABLE FOR THE PROTECTION OF ALL STOCKPILES ON THE SITE, AND THOSE TRANSPORTED FROM THE SITE. DEPOSITIONS OF SOIL MAY BE SUBJECT TO ADDITIONAL REGULATIONS REQUIRING PERMIT, REVIEW OR EROSION AND SEDIMENT CONTROL.
5. KEEP EXTRA E&S CONTROLS ON SITE TO PREVENT ANY RUNOFF INTO THE CUL-DE-SAC
6. THE CONTRACTOR SHALL SPRAY AREAS WITHIN THE PROJECT LIMITS, INCLUDING THOSE OUTSIDE THE IMMEDIATE AREA OF GROUND DISTURBANCE, FOR INVASIVE SPECIES USING AN APPROVED HERBICIDE. THIS TREATMENT SHALL OCCUR PRIOR TO FINAL SEEDING TO ENSURE PROPER SITE STABILIZATION AND MINIMIZE INVASIVE SPECIES REGROWTH.

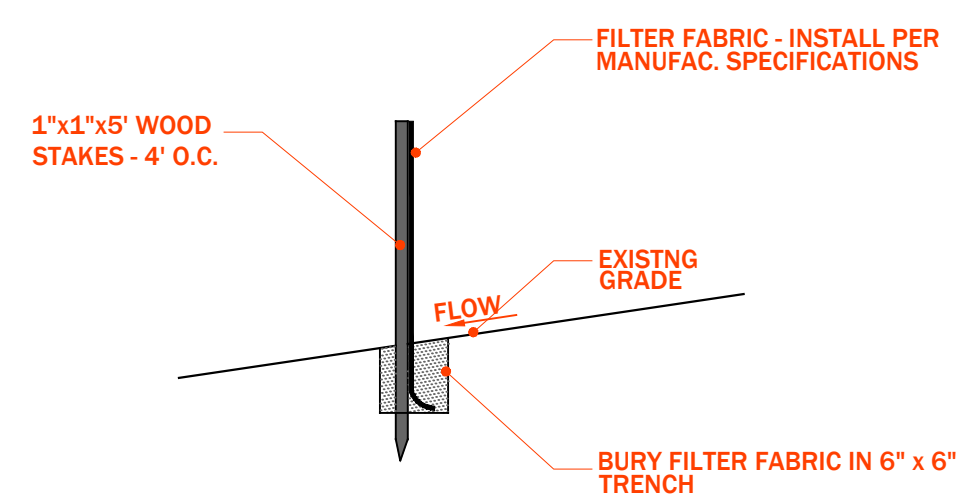
PROPOSED CONSTRUCTION SEQUENCE

1. INSTALLATION OF EROSION CONTROLS AND CONSTRUCTION SITE ENTRANCE.
 - 1.1. COORDINATE SITE INSPECTION WITH CITY OF WORCESTER FOR PRE-CONSTRUCTION INSPECTION.
2. EXCAVATION FOR PROPOSED BUILDING AND UNDERGROUND ROOF INFILTRATION UNITS.
 - 2.1. COORDINATE BOTTOM OF HOLE AND OTHER INSPECTIONS AS NEEDED DURING INSTALLATION.
3. EXCAVATE FOR ADDITIONAL SITE FEATURES, TRUCK EXCESS MATERIAL OFF SITE.
4. BACKFILL AND ROUGH GRADE AROUND FOUNDATIONS
5. HYDROSEED AND FINAL GRADE
 - 5.1. COORDINATE SITE INSPECTION WITH CITY OF WORCESTER UPON COMPLETION OF FINAL GRADING AND HYDROSEEDING.
6. REMOVE CONSTRUCTION ENTRANCE AND PAVE DRIVEWAY SECTION.
7. MAINTAIN EROSION CONTROLS UNTIL FULL STABILIZATION OF EXPOSED SOILS.
 - 7.1. CONDUCT SITE INSPECTION WITH THE CITY OF WORCESTER AND RECEIVE STAMPED AS-BUILT FROM DESIGN ENGINEER.
8. REMOVE AND DISPOSE OF EROSION CONTROLS.

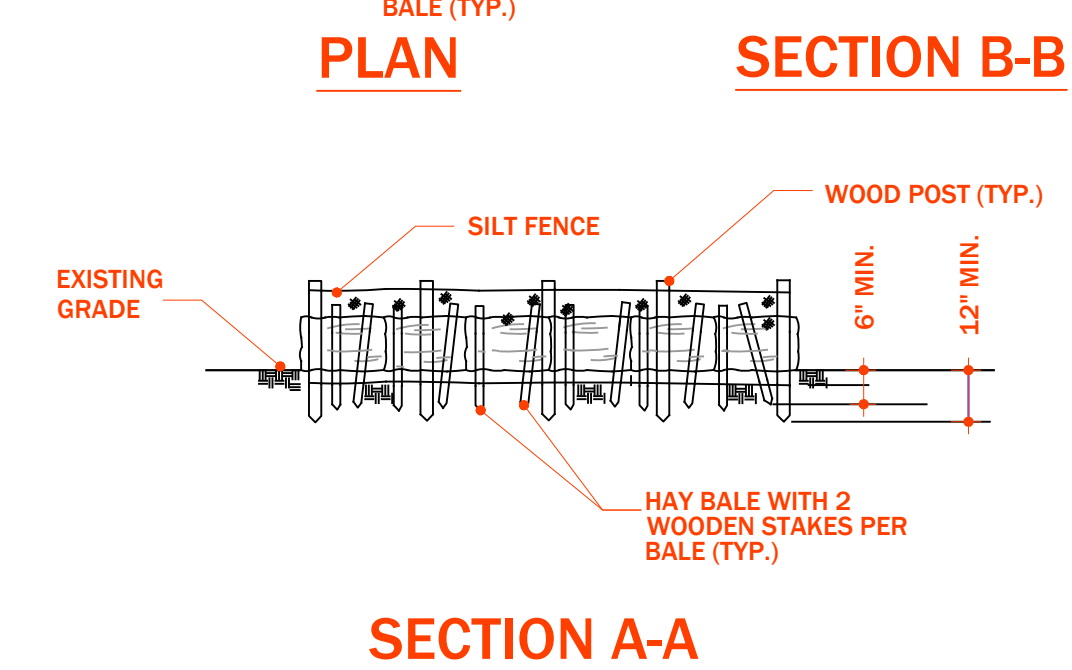
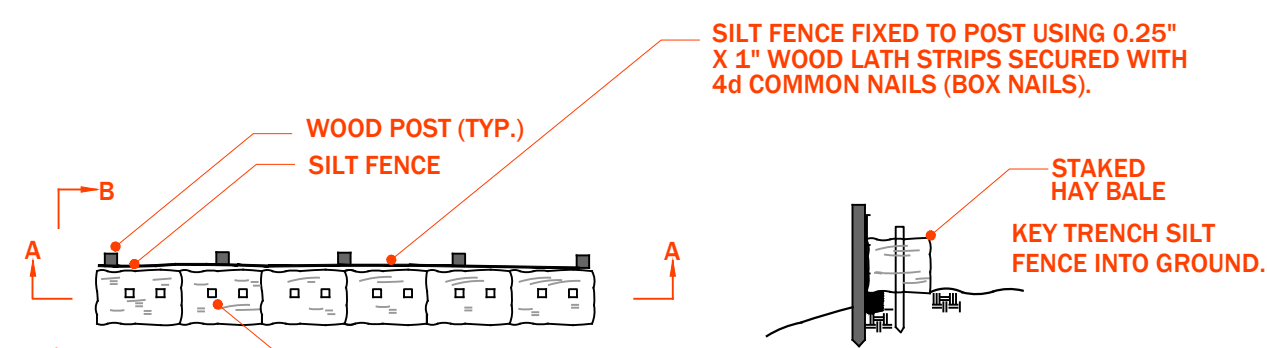


BROOKLINE ST. EXT.
SITE PLAN
EROSION CONTROL PLAN

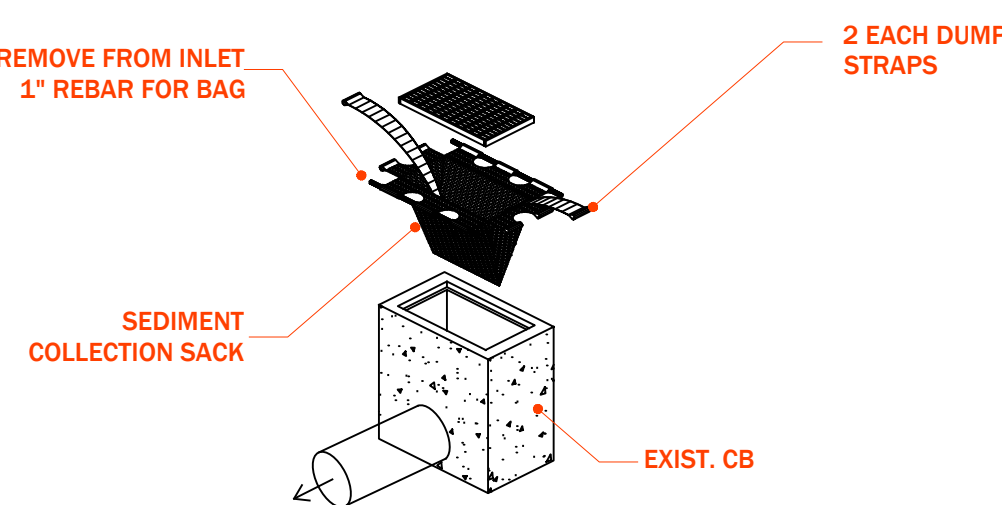
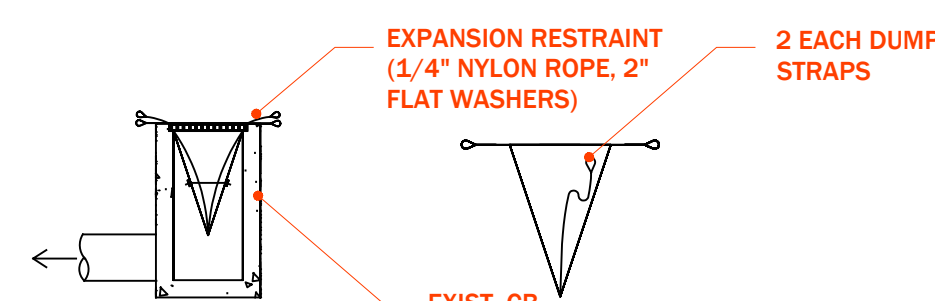
PROJECT NO. 24012	
SCALE: AS NOTED	
C4.1	
SHEET 8	OF 11



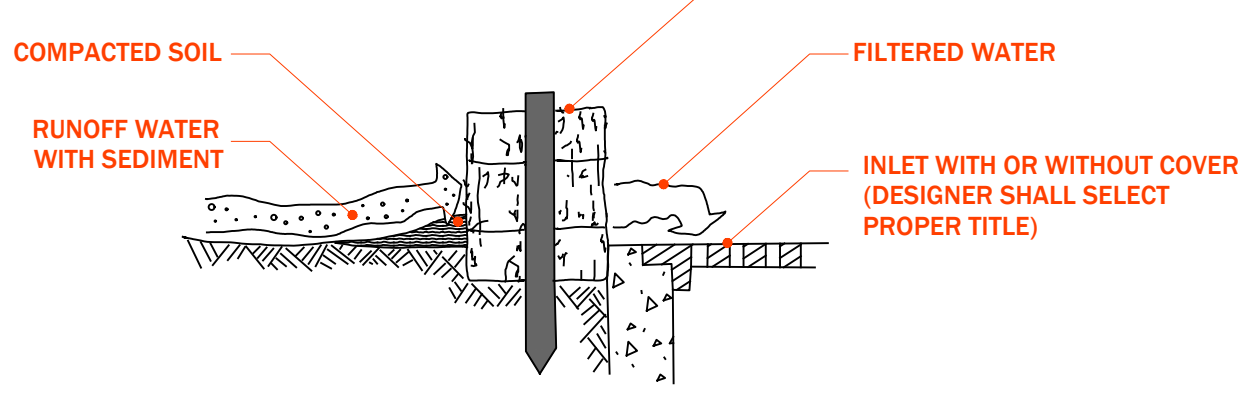
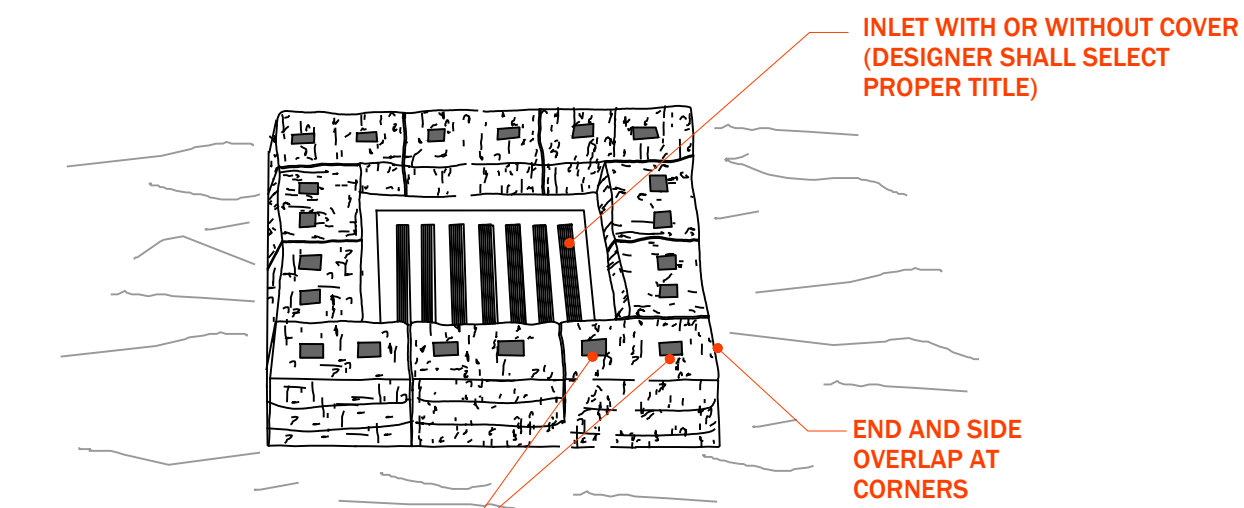
1 SILTATION FENCING
SCALE: NTS



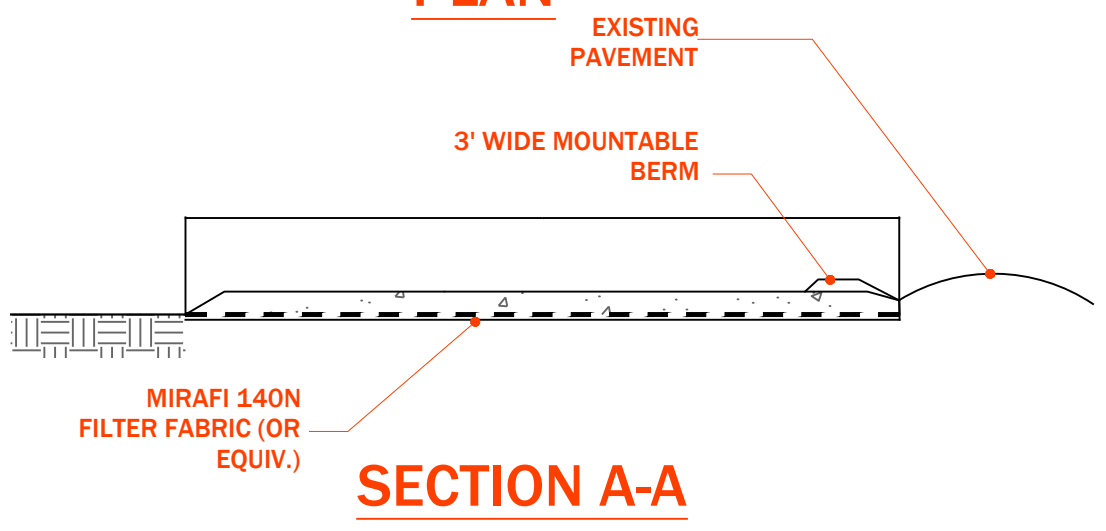
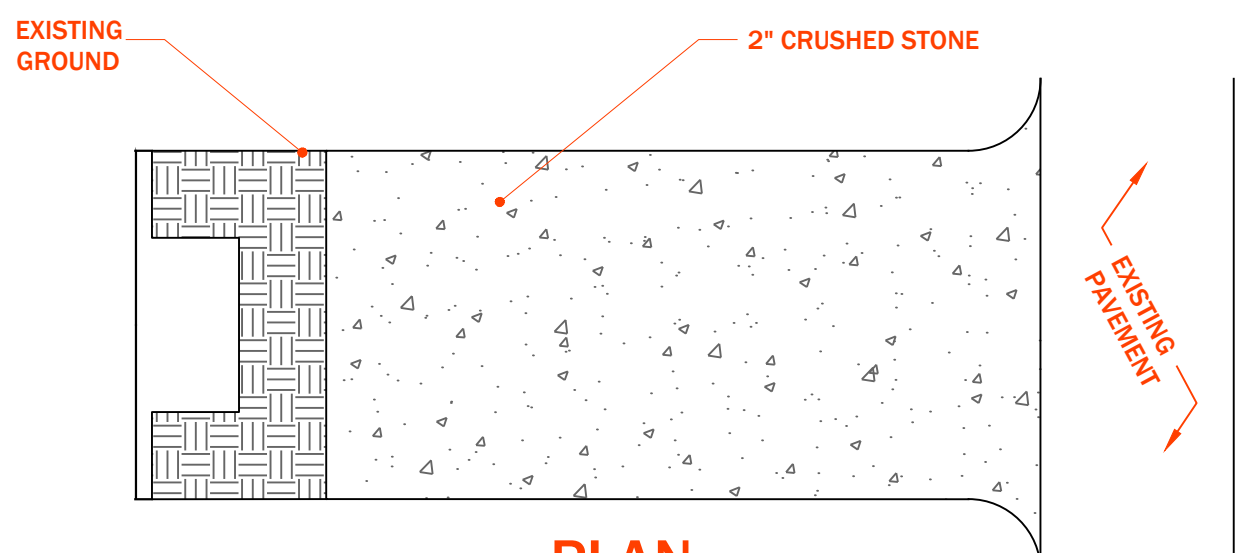
2 HAYBALE SILT FENCING
SCALE: NTS



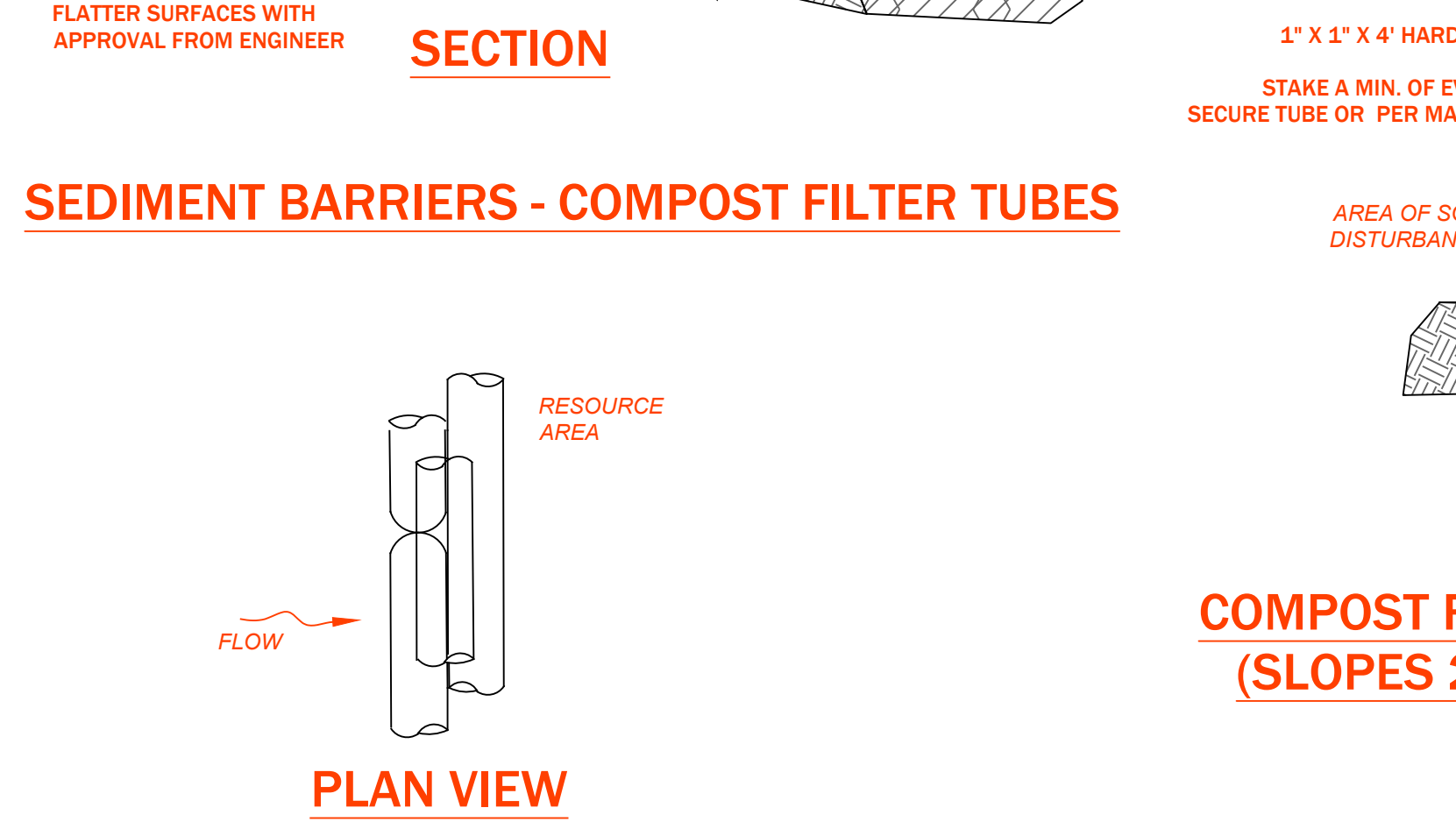
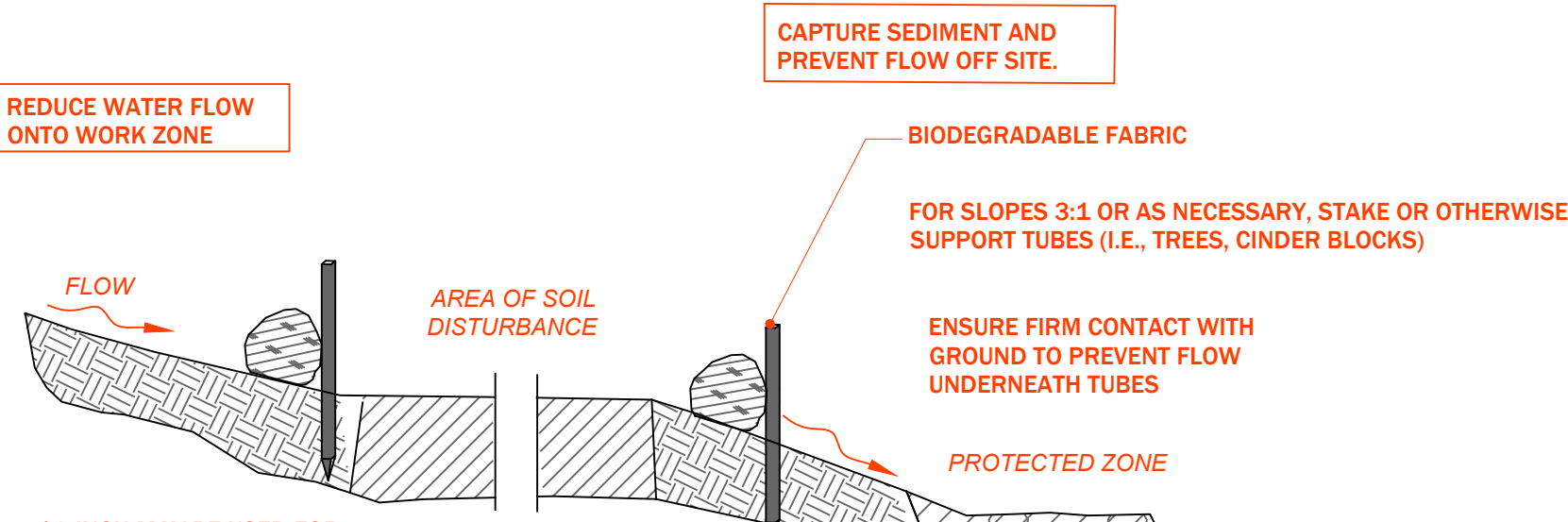
3 INLET PROTECTION
SCALE: NTS



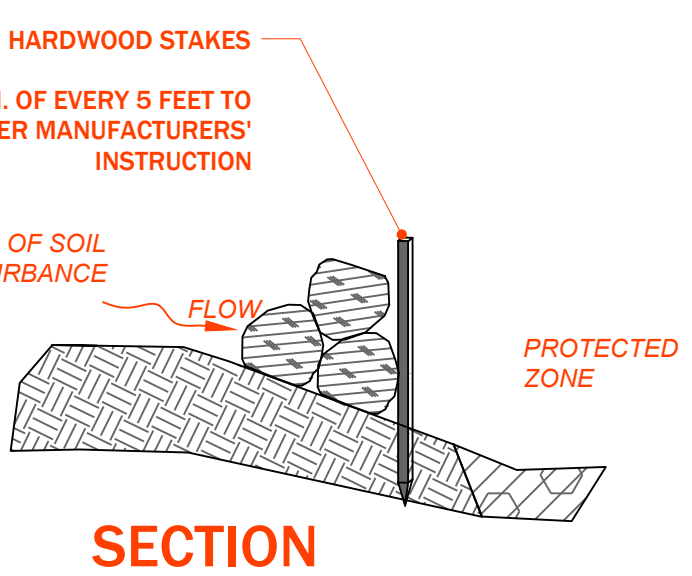
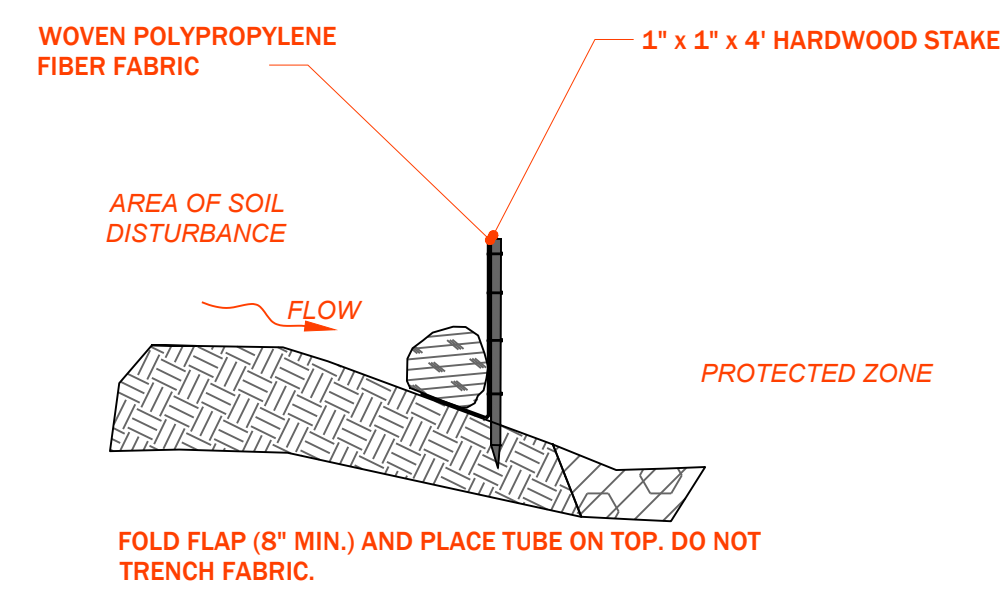
4 INLET SEDIMENT BARRIER
SCALE: NTS



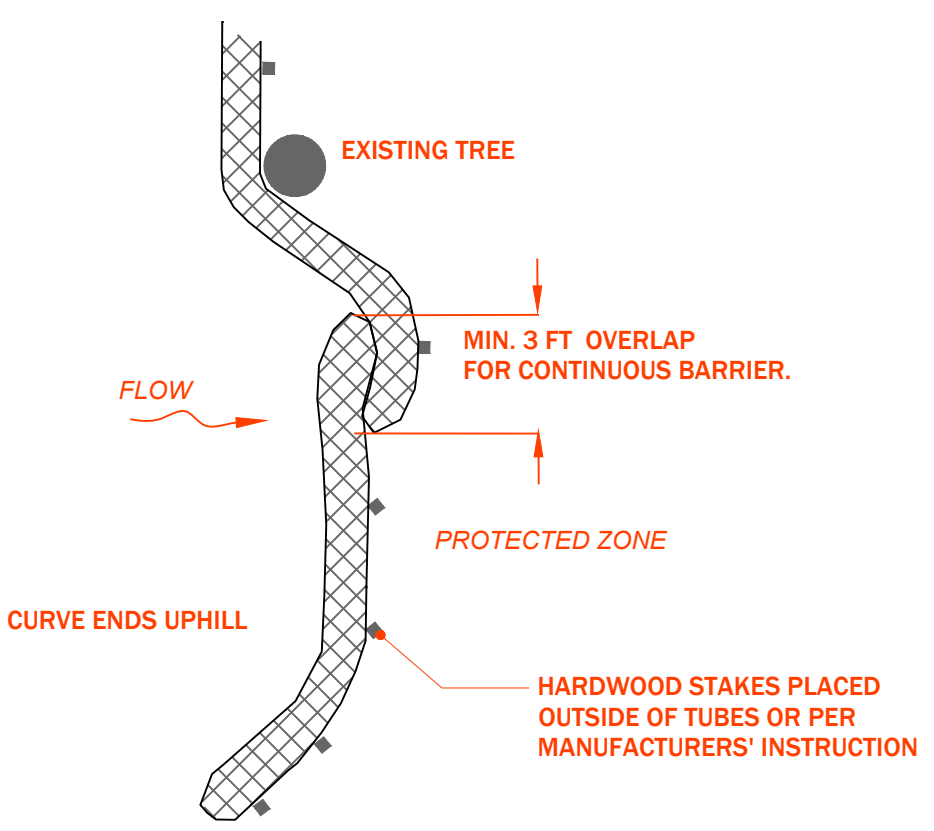
5 CONSTRUCTION ENTRANCE
SCALE: NTS



6 COMPOST FILTER TUBES
SCALE: NTS



COMPOST FILTER TUBE & SILT FENCE



PLACE TUBE ALONG CONTOURS AND PERPENDICULAR TO FLOW.
PLACE AS CLOSE TO LIMIT OF SOIL DISTURBANCE AS POSSIBLE
ADJUST LOCATION AS REQUIRED FOR OPTIMUM EFFECTIVENESS. DO NOT INSTALL IN WATERWAYS.
PLACE STAKES AS NEEDED TO SECURE TUBES IN PLACE.

PLAN VIEW
SEDIMENT BARRIERS

DATE	7/4/24
APPR	
DESCRIPTION	BOARD REVIEW
SYN	0

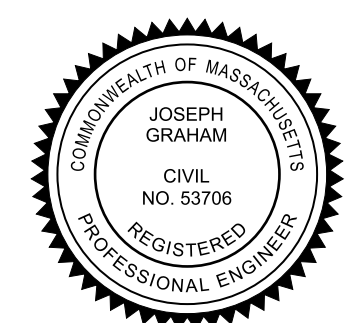
ALI FADHEL

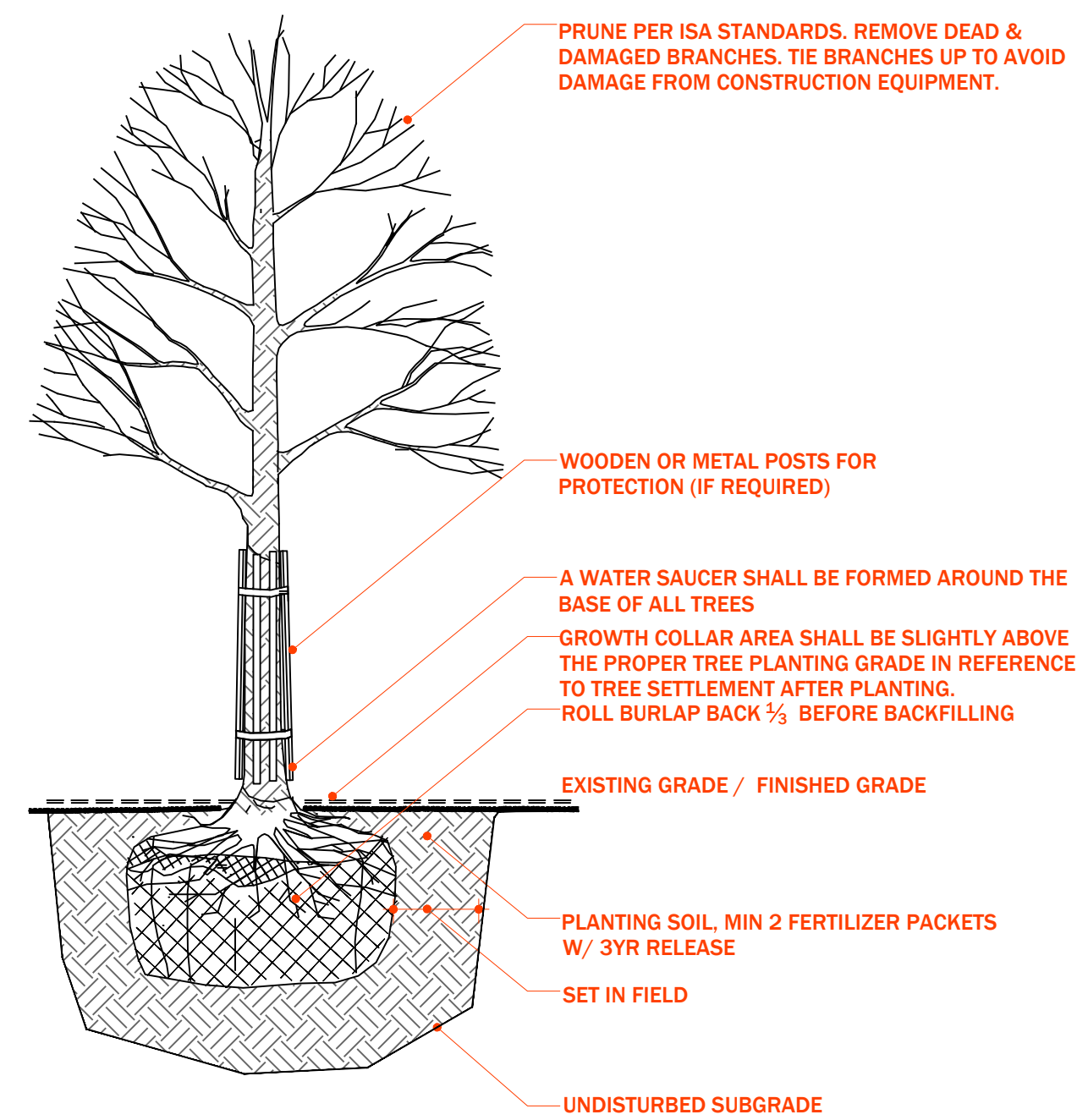
DESIGNED BY	JRG
DRAWN BY	JRG
CHECKED BY	JRG

BROOKLINE ST. EXT. SITE PLAN

CONST. DETAIL SHEET 1 OF 4

DRAWING NO.	24012 - CONST. DETAIL
SCALE	AS NOTED
PROJECT NO.	24012
C5.1	

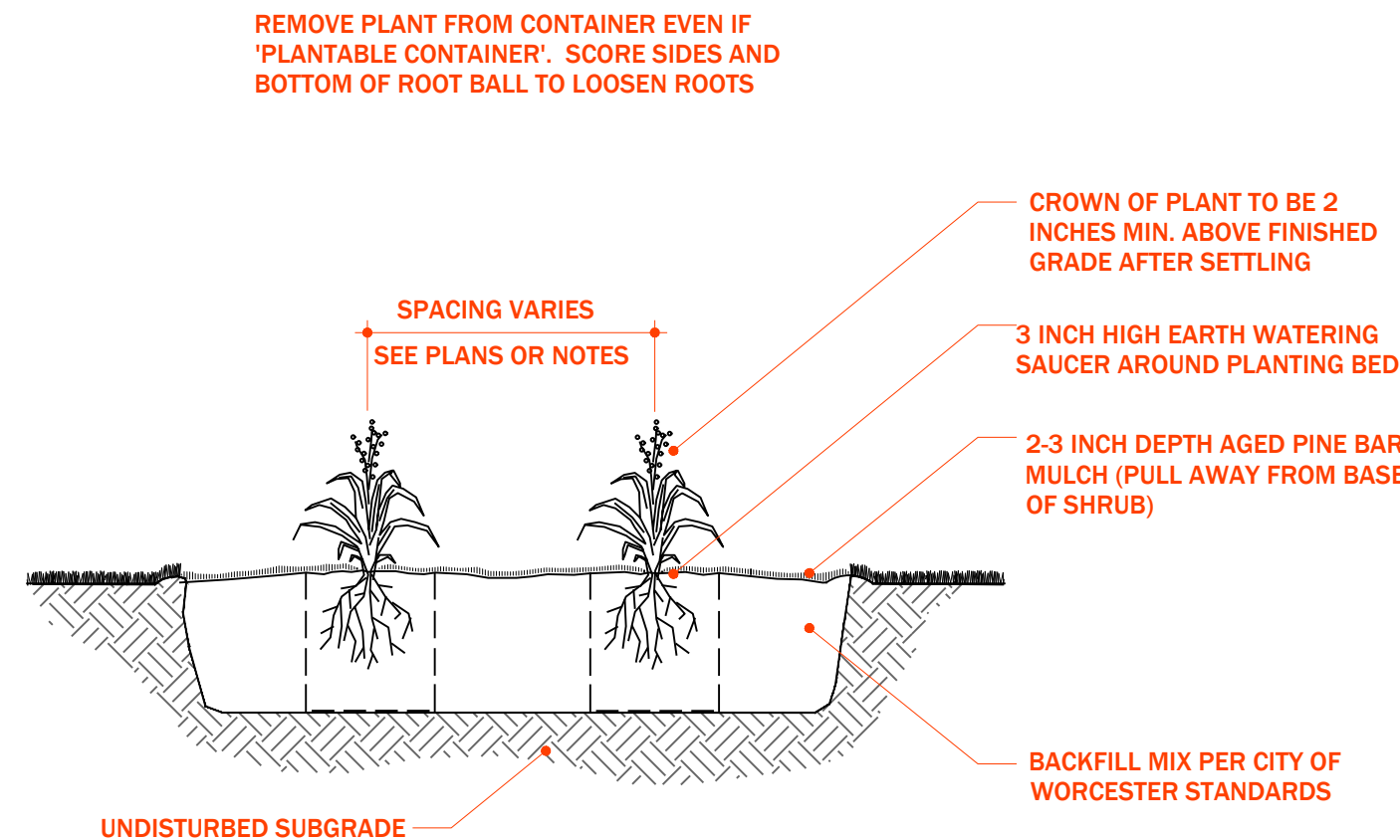




- CONTRACTOR TO LOCATE ALL UNDERGROUND UTILITIES SPRINKLER SYSTEMS, CITY WATER GATES, AND ETC. BEFORE DIGGING TREE PLANTING PITS.
- NO TREE STAKES AND NO WRAP REQUIRED.
- ROOT BALL SHALL BE SET ON COMPACTED SOIL AREA TO REDUCE SETTLEMENT OF THE TREE.

7 TREE PLANTING

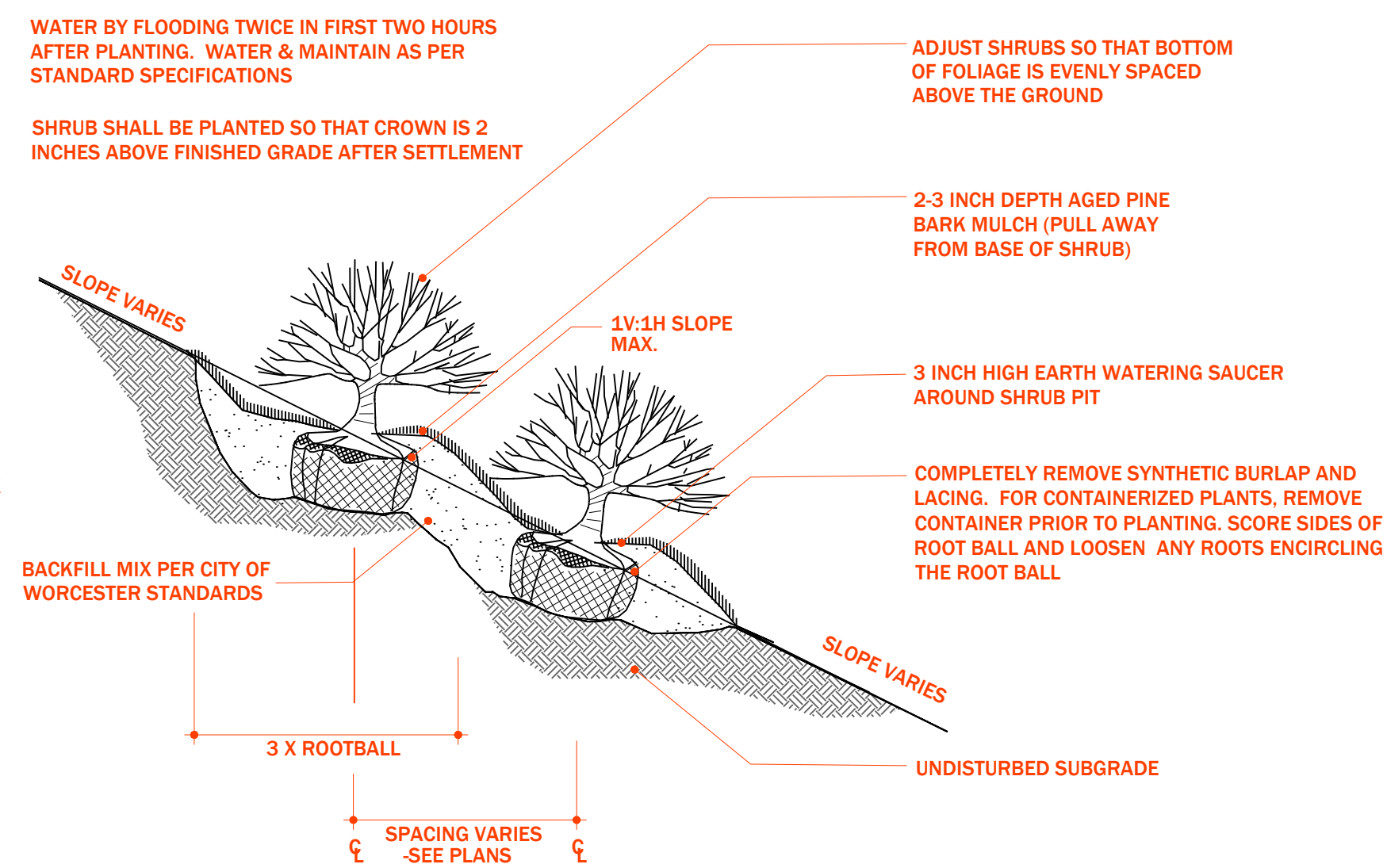
SCALE: NTS



- EXCAVATE TO REQUIRED DEPTH AND BACKFILL WITH PLANTING MIX.
- RAISE AND REPLANT ANY PLANTS THAT SETTLE MORE THAN 3 INCHES AFTER PLANTING AND WATERING.
- WATER BY FLOODING TWICE IN FIRST TWO HOURS AFTER PLANTING. WATER & MAINTAIN AS PER SPECIFICATIONS.

8 SHRUB PLANTING

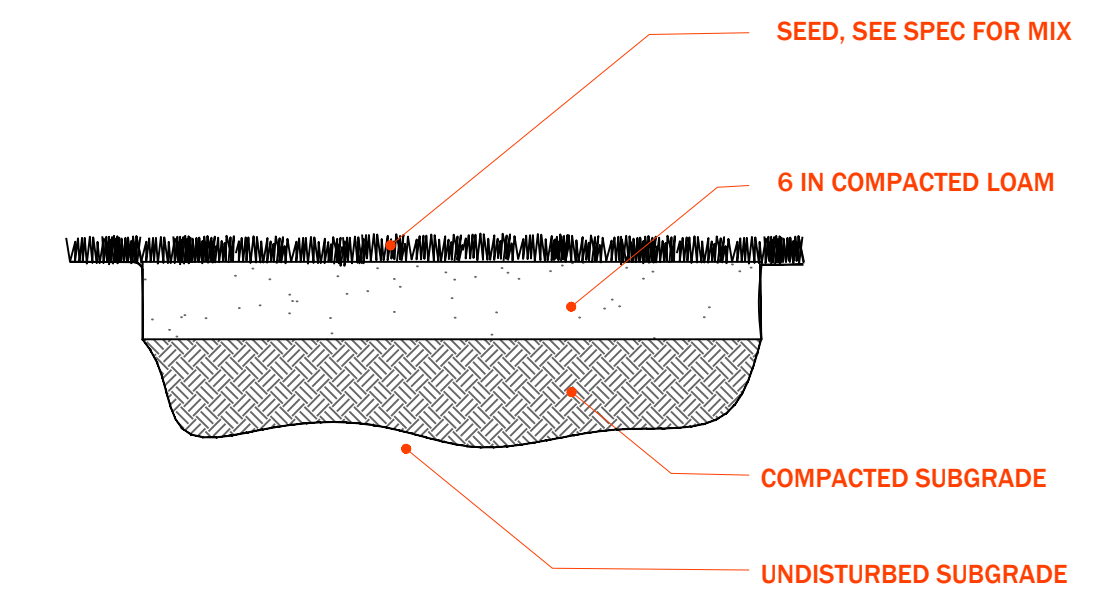
SCALE: NTS



- LOOSE OR CRACKED ROOTBALLS WILL NOT BE ACCEPTED FOR PLANTING
- AGED PINE BARK MULCH SHALL BE INSTALLED WITHIN THE LIMITS OF THE ISLAND.
- PLANTS SHALL BE LOCATED A MINIMUM OF 3 FEET FROM FACE OF PROPOSED CURB.

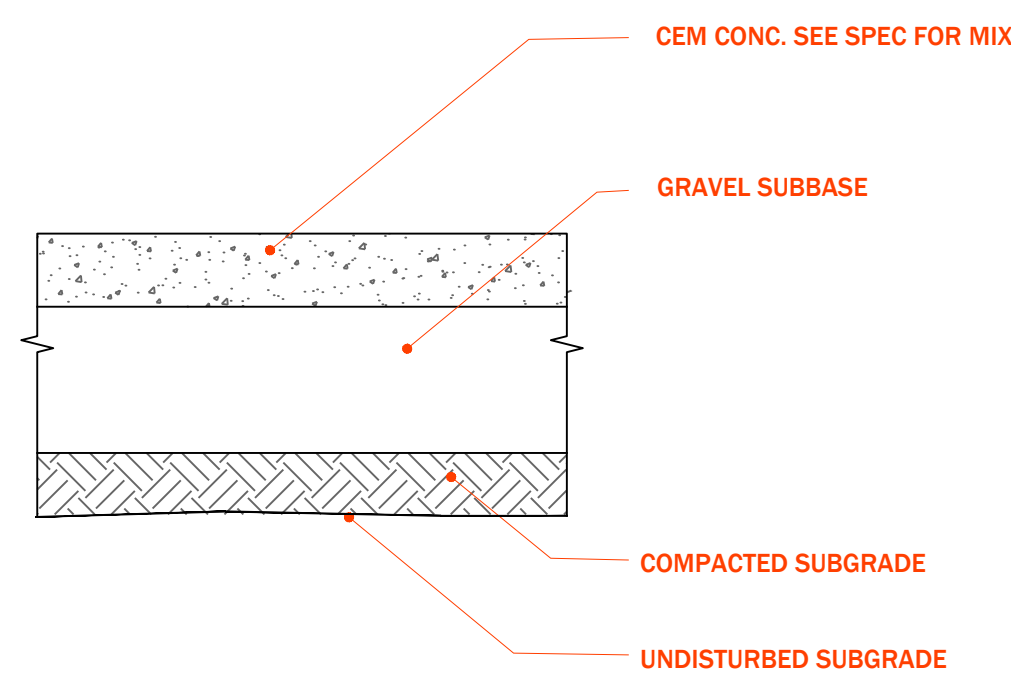
9 PLANTING ON SLOPE

SCALE: NTS



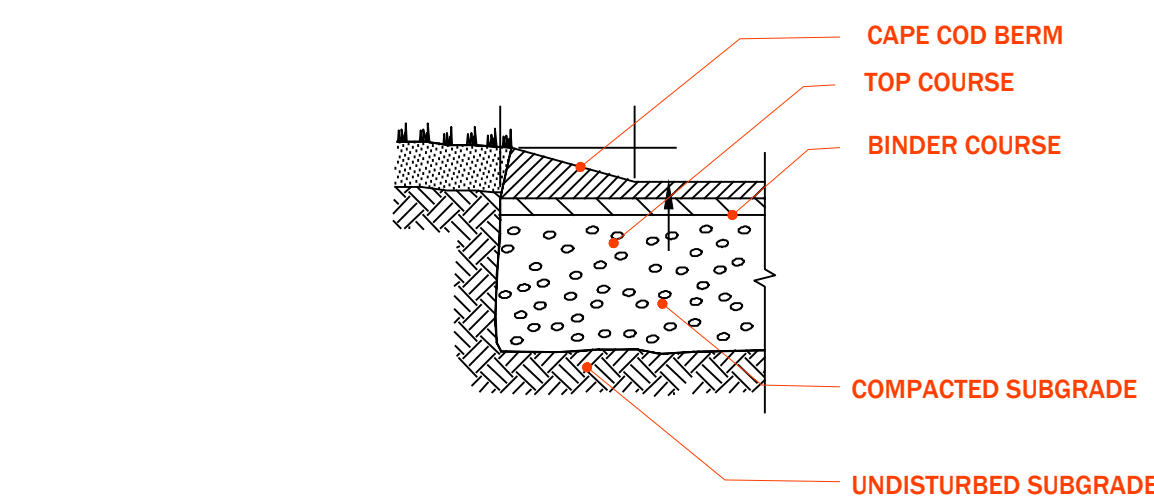
10 LOAM AND SEED

SCALE: NTS



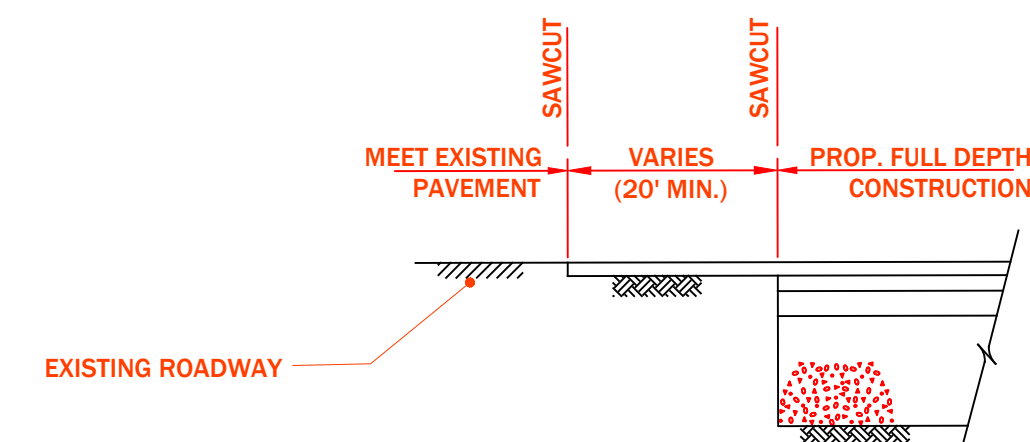
11 CEM CONC. SIDEWALK

SCALE:



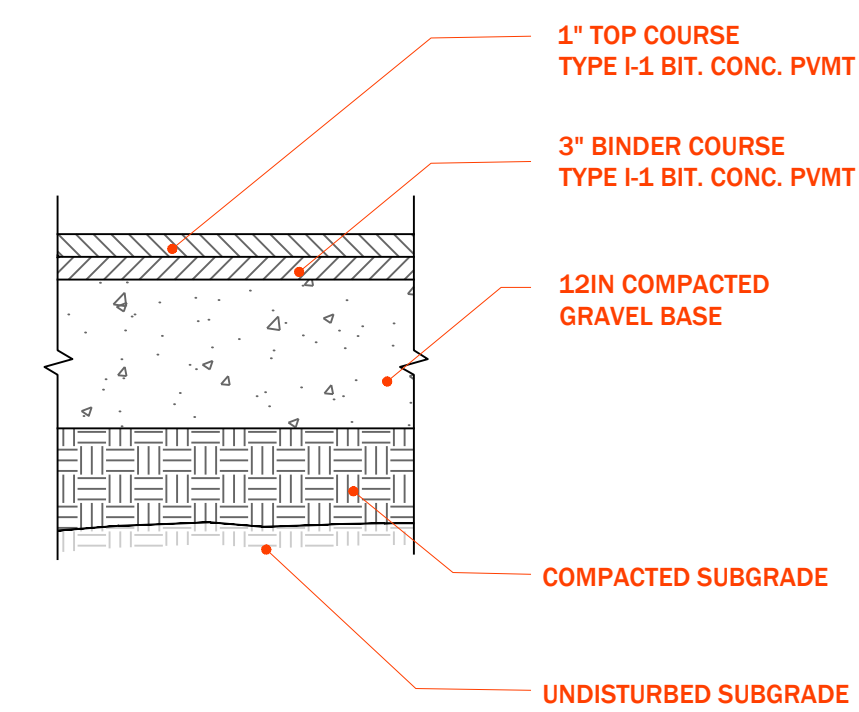
12 CAPE COD BERM

SCALE: NTS



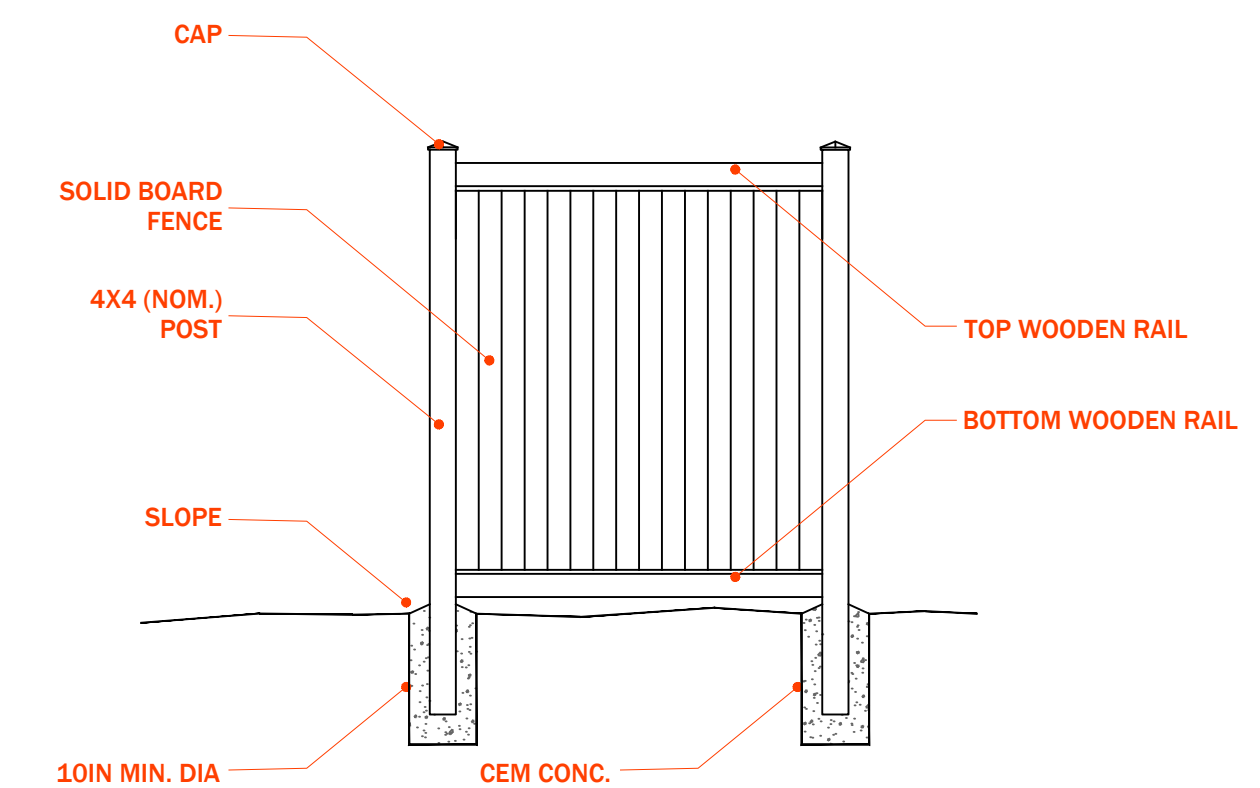
12 FULL DEPTH HMA TRANS.

SCALE: NTS



13 BIT. CONC. PAVEMENT

SCALE: NTS



- INSTALLATION TO BE COMPLETED IN ACCORDANCE WITH MANUFACTURER'S SPECIFICATIONS.
- LINE POSTS TO BE SPACED AT 8FT. O.C. UNLESS OTHERWISE NOTED.



14 SOLID BOARD PRIVACY FENCE

SCALE: NTS

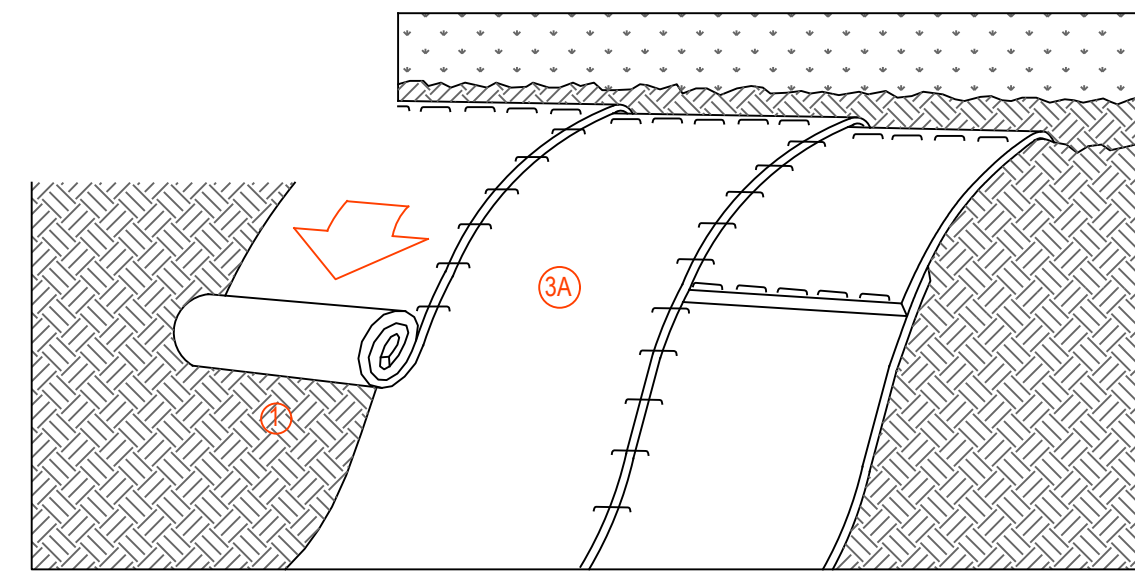
DATE	7/4/24
APPR	
DESCRIPTION	BOARD REVIEW
SYN	0

ALI FADHEL

DESIGNED BY	JRG
DRAWN BY	JRG
CHECKED BY	JRG

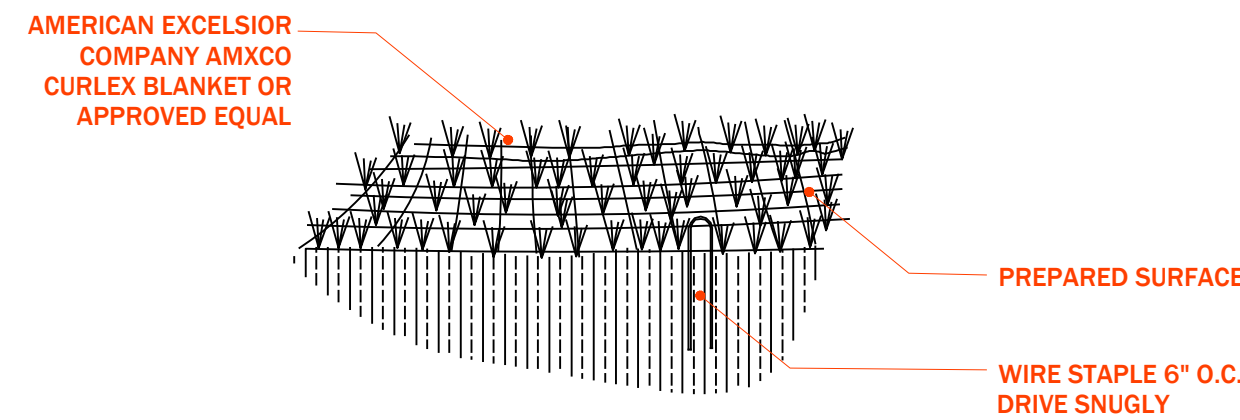
BROOKLINE ST. EXT. SITE PLAN
CONST. DETAIL SHEET 2 OF 4

DRAWING NO.	24012 - CONST. DETAIL
SCALE:	AS NOTED
PROJECT NO.:	24012
C5.2	
SHEET	10 OF 11



SLOPE INSTALLATION

1. PREPARE SOIL BEFORE INSTALLING BLANKETS, INCLUDING ANY NECESSARY APPLICATION OF LIME, FERTILIZER, AND SEED. NOTE: WHEN USING CELL-O-SEED DO NOT SEED PREPARED AREA. CELL-O-SEED MUST BE INSTALLED WITH PAPER SIDE DOWN.
2. BEGIN AT THE TOP OF THE SLOPE BY ANCHORING THE BLANKET IN A 6" (15CM) DEEP X 6" (15CM) WIDE TRENCH WITH APPROXIMATELY 12" (30CM) OF BLANKET EXTENDED BEYOND THE UP-SLOPE PORTION OF THE TRENCH. ANCHOR THE BLANKET WITH A ROW OF STAPLES/STAKES APPROXIMATELY 12" (30CM) APART IN THE BOTTOM OF THE TRENCH. BACKFILL AND COMPACT THE TRENCH AFTER STAPLING. APPLY SEED TO COMPACTED SOIL AND FOLD REMAINING 12" (30CM) PORTION OF BLANKET BACK OVER SEED AND COMPACTED SOIL. SECURE BLANKET OVER COMPACTED SOIL WITH A ROW OF STAPLES/STAKES SPACED APPROXIMATELY 12" (30CM) APART ACROSS THE WIDTH OF THE BLANKET.
3. ROLL THE BLANKETS (A) DOWN OR (B) HORIZONTALLY ACROSS THE SLOPE. BLANKETS WILL UNROLL WITH APPROPRIATE SIDE AGAINST THE SOIL SURFACE. ALL BLANKETS MUST BE SECURELY FASTENED TO SOIL SURFACE BY PLACING STAPLES/STAKES IN APPROPRIATE LOCATIONS AS SHOWN IN THE STAPLE PATTERN GUIDE. WHEN USING OPTIONAL DOT SYSTEM, STAPLES/STAKES SHOULD BE PLACED THROUGH EACH OF THE COLORED DOTS CORRESPONDING TO THE APPROPRIATE STAPLE PATTERN.
4. THE EDGES OF PARALLEL BLANKETS MUST BE STAPLED WITH APPROXIMATELY 2"-5" (5CM-12.5CM) OVERLAP DEPENDING ON BLANKET TYPE. TO ENSURE PROPER SEAM ALIGNMENT, PLACE THE EDGE OF THE OVERLAPPING BLANKET (BLANKET BEING INSTALLED ON TOP) EVEN WITH THE COLORED SEAM STITCH ON THE PREVIOUSLY INSTALLED BLANKET.
5. CONSECUTIVE BLANKETS SPICED DOWN THE SLOPE MUST BE PLACED END OVER END (SHINGLE STYLE) WITH AN APPROXIMATE 3" (7.5CM) OVERLAP. STAPLE THROUGH OVERLAPPED AREA, APPROXIMATELY 12" (30CM) APART ACROSS ENTIRE BLANKET WIDTH.

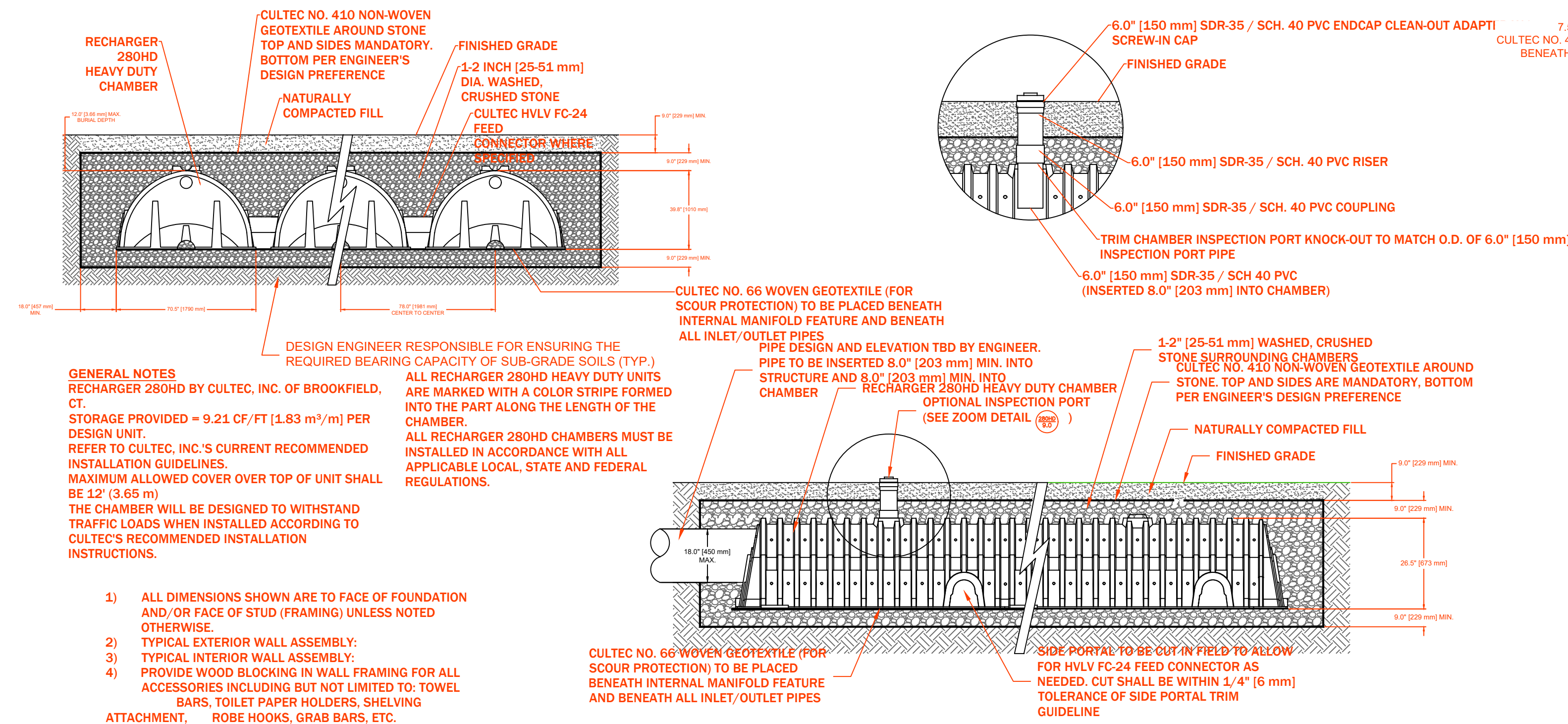


15b SLOPE STABILIZATION

SCALE: NTS

15a EROSION CONTROL MATTING

SCALE: NTS

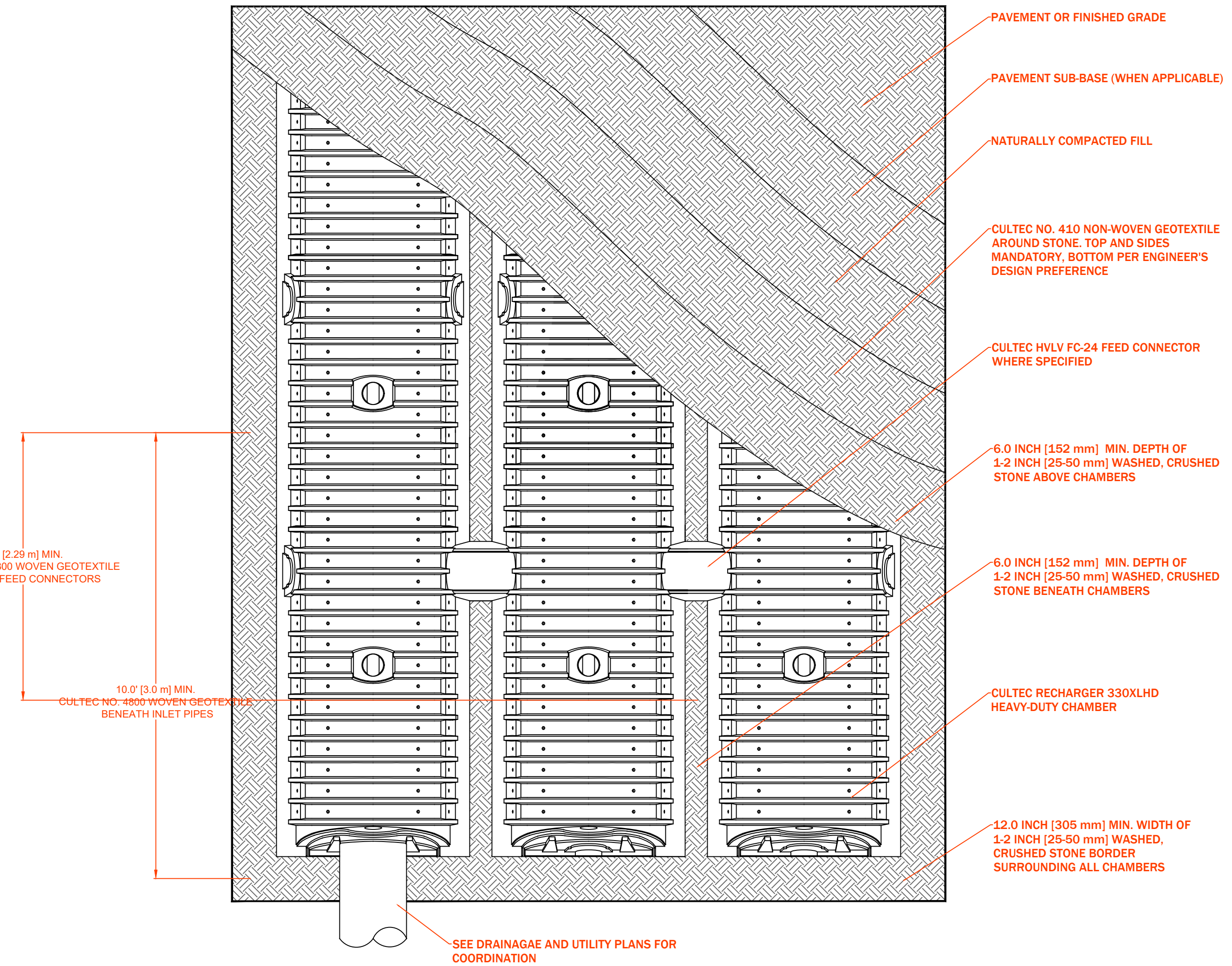


GENERAL NOTES
 RECHARGER 280HD BY CULTEC, INC. OF BROOKFIELD, CT.
 STORAGE PROVIDED = 9.21 CF/FT [1.83 m³/m] PER DESIGN UNIT.
 REFER TO CULTEC, INC.'S CURRENT RECOMMENDED INSTALLATION GUIDELINES.
 MAXIMUM ALLOWED COVER OVER TOP OF UNIT SHALL BE 12' (3.65 m).
 THE CHAMBER WILL BE DESIGNED TO WITHSTAND TRAFFIC LOADS WHEN INSTALLED ACCORDING TO CULTEC'S RECOMMENDED INSTALLATION INSTRUCTIONS.

- 1) ALL DIMENSIONS SHOWN ARE TO FACE OF FOUNDATION AND/OR FACE OF STUD (FRAMING) UNLESS NOTED OTHERWISE.
- 2) TYPICAL EXTERIOR WALL ASSEMBLY:
- 3) TYPICAL INTERIOR WALL ASSEMBLY:
- 4) PROVIDE WOOD BLOCKING IN WALL FRAMING FOR ALL ACCESSORIES INCLUDING BUT NOT LIMITED TO: TOWEL BARS, TOILET PAPER HOLDERS, SHELVING ATTACHMENT, ROBE HOOKS, GRAB BARS, ETC.

16 INFILTRATION UNIT DETAIL

SCALE: NTS



36.0' Wide x 3.0' Spacing = 39.0' C-C Row Spacing
 3 Chambers/Row x 6.33' Long +1.00' Row Adjustment = 19.99' Row Length +12.0" End Stone x 2 = 21.99' Base Length
 2 Rows x 36.0' Wide x 3.0' Spacing x 1 + 12.0" Side Stone x 2 = 8.25' Base Width
 6.0" Stone Base + 20.5" Chamber Height + 6.0" Stone Cover = 2.71' Field Height
 6 Chambers x 21.8 cf +1.00' Row Adjustment x 3.44 sf x 2 Rows = 137.5 cf Chamber Storage
 491.3 cf Field - 137.5 cf Chambers = 353.8 cf Stone x 40.0% Voids = 141.5 cf Stone Storage
 Chamber Storage + Stone Storage = 279.0 cf = 0.006 af
 Overall Storage Efficiency = 56.8%
 Overall System Size = 21.99' x 8.25' x 2.71'
 6 Chambers
 18.2 cy Field
 13.1 cy Stone

17 INFILTRATION UNIT DETAIL

SCALE: NTS



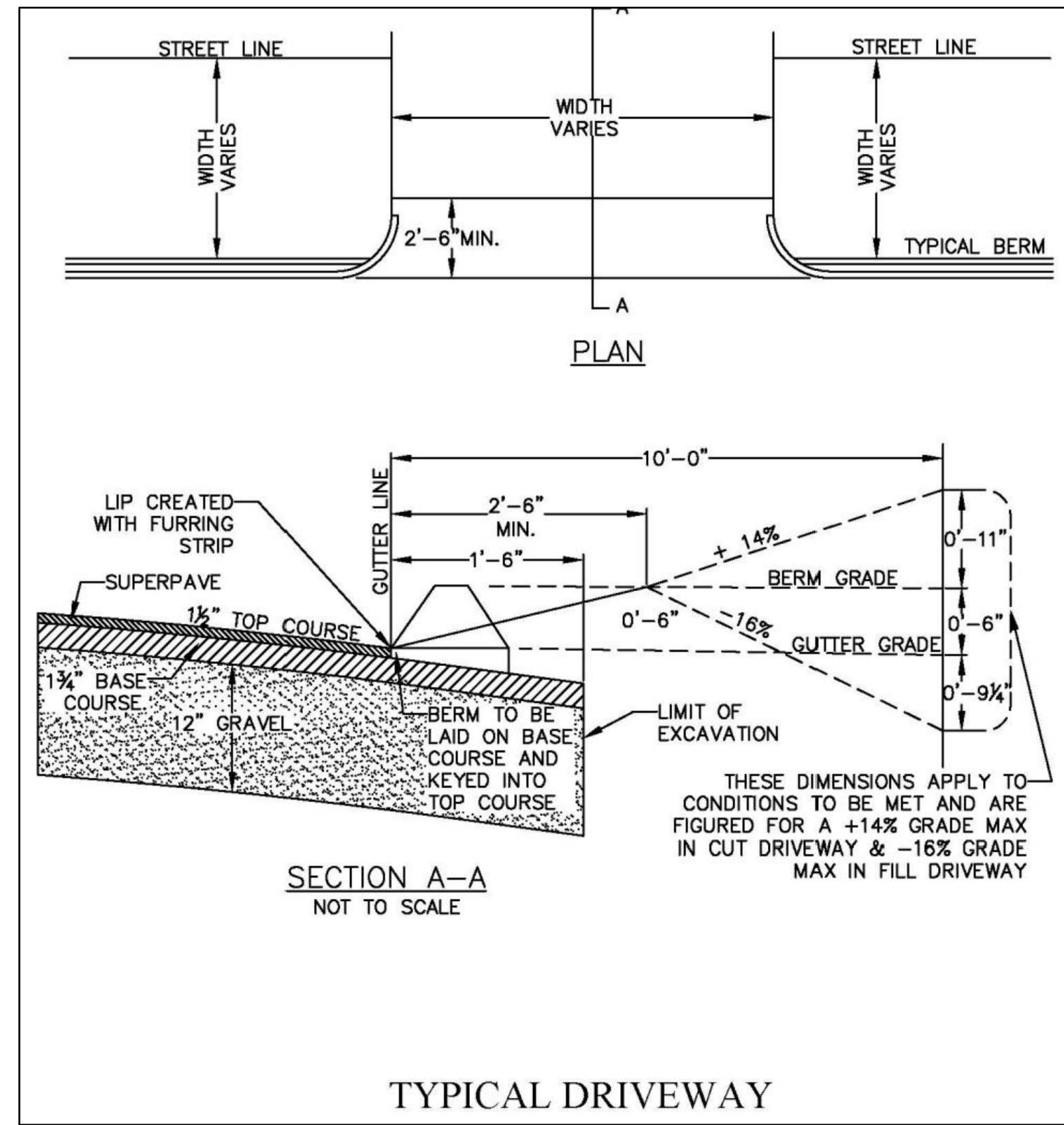
DATE	7/4/24
DESCRIPTION	BOARD REVIEW
SYN	0
APPR	

ALI FADHEL

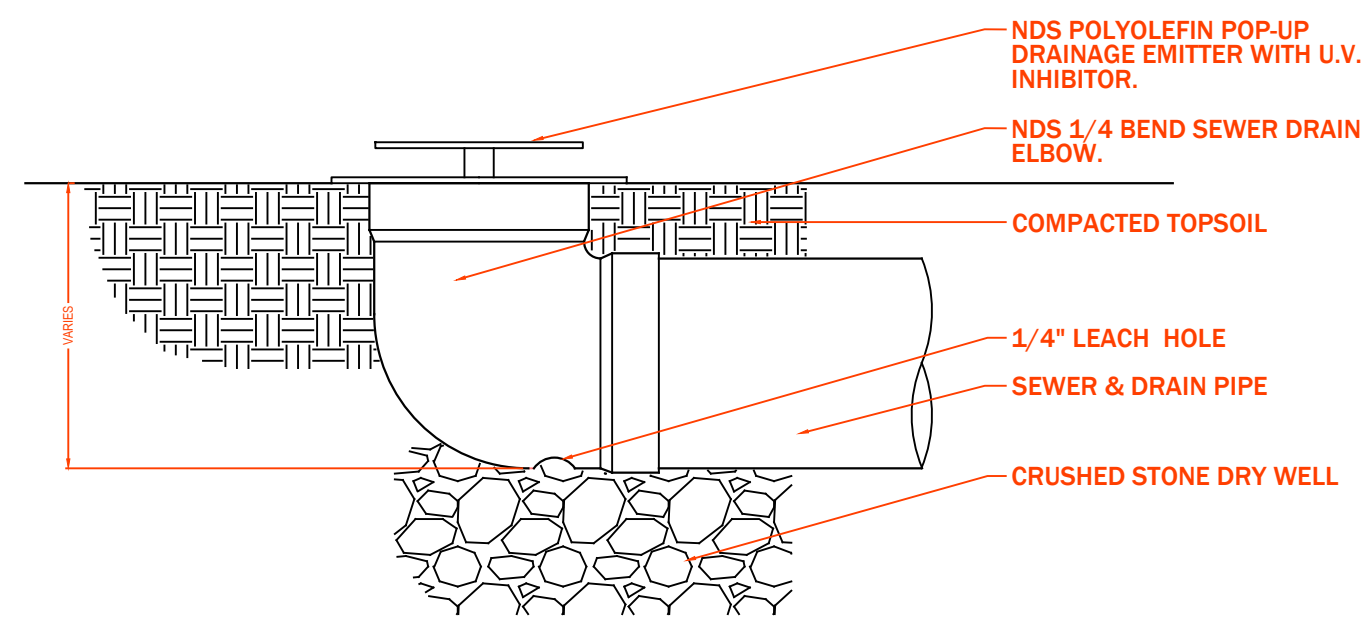
DESIGNED BY	JRG
DRAWN BY	JRG
CHECKED BY	JRG

BROOKLINE ST. EXT. SITE PLAN
CONST. DETAIL SHEET 3 OF 4

DRAWING NO.	24012 - CONST. DETAIL
SCALE	AS NOTED
PROJECT NO.	24012
C5.3	
SHEET	11 OF 11



18 DRIVEWAY ENTRANCE
SCALE: NTS



SECTION

- NOTES:
1. INSTALLATION TO BE COMPLETED IN ACCORDANCE WITH MANUFACTURER'S SPECIFICATIONS.
 2. DO NOT SCALE DRAWING.
 3. THIS DRAWING IS INTENDED FOR USE BY ARCHITECTS, ENGINEERS, CONTRACTORS, CONSULTANTS AND DESIGN PROFESSIONALS FOR PLANNING PURPOSES ONLY.
 4. ALL INFORMATION CONTAINED HEREIN WAS CURRENT AT THE TIME OF DEVELOPMENT BUT MUST BE REVIEWED AND APPROVED BY THE PRODUCT MANUFACTURER TO BE CONSIDERED ACCURATE.

19 DRAINAGE EMITTER
SCALE: NTS



APPR	
DATE	7/4/24
DESCRIPTION	BOARD REVIEW
SYN	0

ALI FADHEL

DESIGNED BY	JRG
DRAWN BY	JRG
CHECKED BY	JRG

BROOKLINE ST.
EXT. SITE PLAN
CONST. DETAIL SHEET 4 OF 4

DRAWING NO.	24012 - CONST. DETAIL
SCALE:	AS NOTED
PROJECT NO.:	24012

C5.4